



PORTABLE LITTER VACUUM

LP61-G

Skid-mount or trailer-mount

 **Madvac**®

 **Sourcewell**
Formerly NJPA

 **canoe**
procurement group of canada

awarded contract vendor



www.madvac.com

Technical specs are subject to change without prior notice

LP61-G is a high-performance litter vacuum specifically designed for areas that larger units can't access or manage, or to replace tedious manual litter picking

- Fencelines
- Parking lots
- Parks
- Alleys
- Alongside buildings
- Roads & highways
- Trails, ditches, hills, shelters, etc.



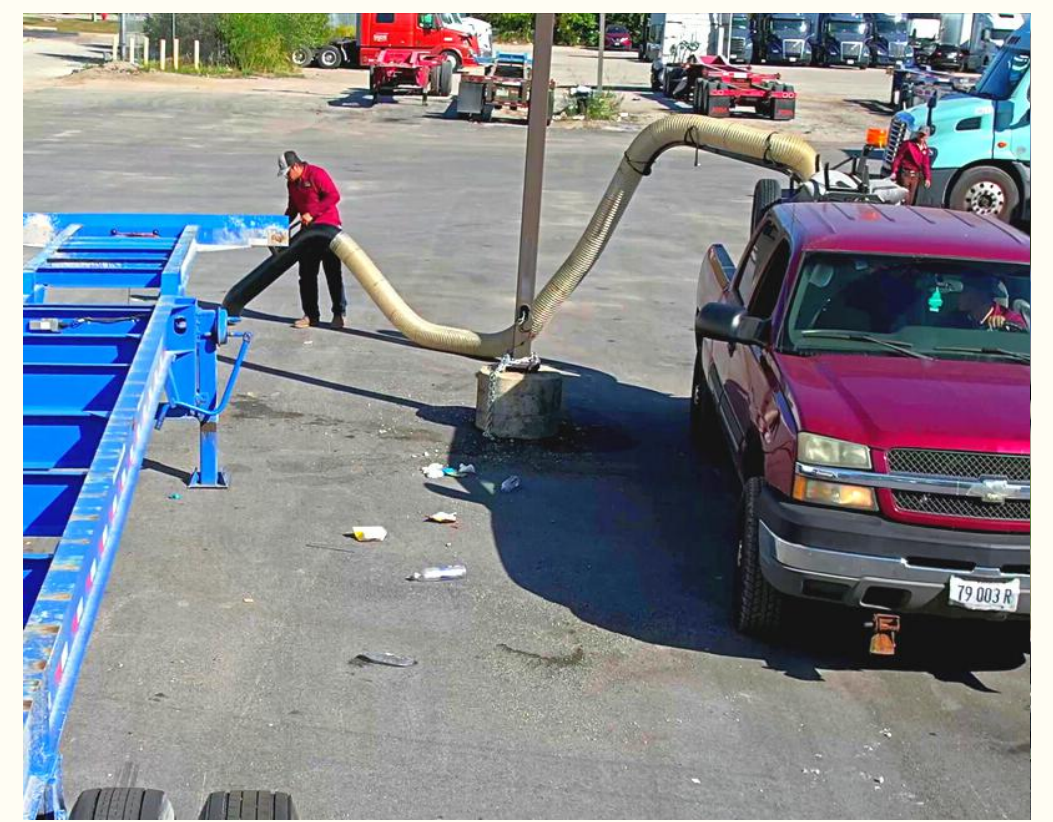
LP61-G is the ideal portable litter collector for

- Cities and municipalities
- Outdoor cleaning contractors
- Landfills
- Manufacturing facilities
- Transfer stations
- Solid waste & recycling centers
- Amusement parks
- Transit authorities
- Educational and sports facilities
- Distribution centers
- Correctional facilities
- Healthcare services
- Military



Key Attributes

- 5x more efficient and safer than manual picking | powerful vacuum 2200 CFM
- Collects litter that is dry, humid, or wet
- Compact, lightweight, easy to use
- 2 transport options:
 - standard pickup truck with 6-ft bed
 - tow behind trailer with hitch
- Suction hose (with handle) 25 ft. (7.62 m) can be extended up to 50 ft. (15.24 m)
- Minimal maintenance



Built to suit your needs

Configure the LP61-G according to your specific requirements

- SKID-mount or TRAILER-mount
- Trailer version has street legal lighting
 - Available trailer attachment types: ball 1-7/8" / ball 2" / pintle
 - Spare wheel mounted on trailer
- Additional 15 ft. (4572 mm) hose extension
- Additional 25 ft. (7620 mm) hose extension
- 2 micron interior cylindrical filter cartridge (for additional dust control)
- Litter collector bags or bagless debris system (Kevlar bin)

To request a quote www.madvac.com
Diesel / Gas -> LP61-G -> Request a quote



Madvac LP61-G Data & Performance Information

Technical Specifications

Fuel type	Petrol (Gas) - no diesel
Fuel tank capacity	Motor 1.6 gal. (6 L) + two tanks 10.4 gal. (39.4 L) Total = 12 gal (45.4 L)
Litter capacity	50 gal. (190 L)
Vaccum rating	2200 CFM
Standard hose	Diameter: 8 in. (203 mm); length: 25 ft. (7.62 m) including the handle
Hose support arm	360-degree rotating vacuum hose support arm
Collection system type	Straight-through suction system compacts litter
Instruments	Hour, fuel, emergency stop button, strobe beacon

Engine Data

Model	Vanguard 400 / Briggs & Stratton
Displacement	408 cc (25 cu in.)
Gross rated power	10.4 KW (14 HP)



Skid Mount

Length	72 in. (1828 mm)
Width	47.2 in. (1198 mm)
Height	49.5 in. (1257 mm)
Weight	750 lbs (340 kg)

Trailer Mount

Wheels	175/80 R 13, 4-season radial tires
Lighting	4 corner lights
Length	130 in. (3300 mm)
Width	47.2 in. (1198 mm)
Height	57.5 in. (1460 mm)
Weight	952 lbs (425 kg)



Proud manufacturer of the Madvac product line

Telephone:
 • 1-855-651-0444 (toll free - US/Canada)
 • 1-450-651-0444 (international)
Fax: 450-651-0447
Email: info@exprolink.com

Address: 2170 Rue de la Province
 Longueuil QC
 Canada J4G 1R7
Website: www.madvac.com
Sourcewell (US) and Canoe (Canada) contract vendor number: 093021-EXP

