

**ALL-TERRAIN
LITTER VACUUM**

LR50

Compact urban cleaning vehicle



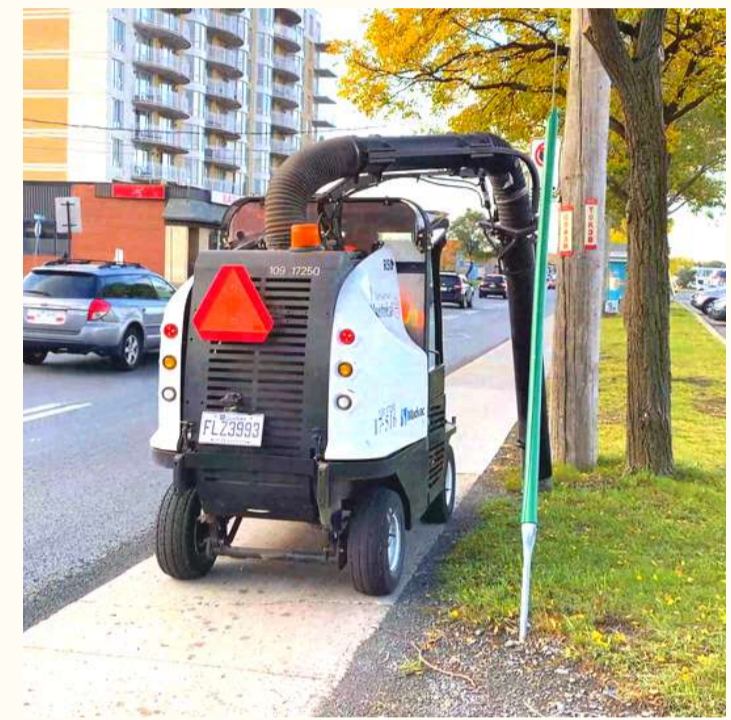
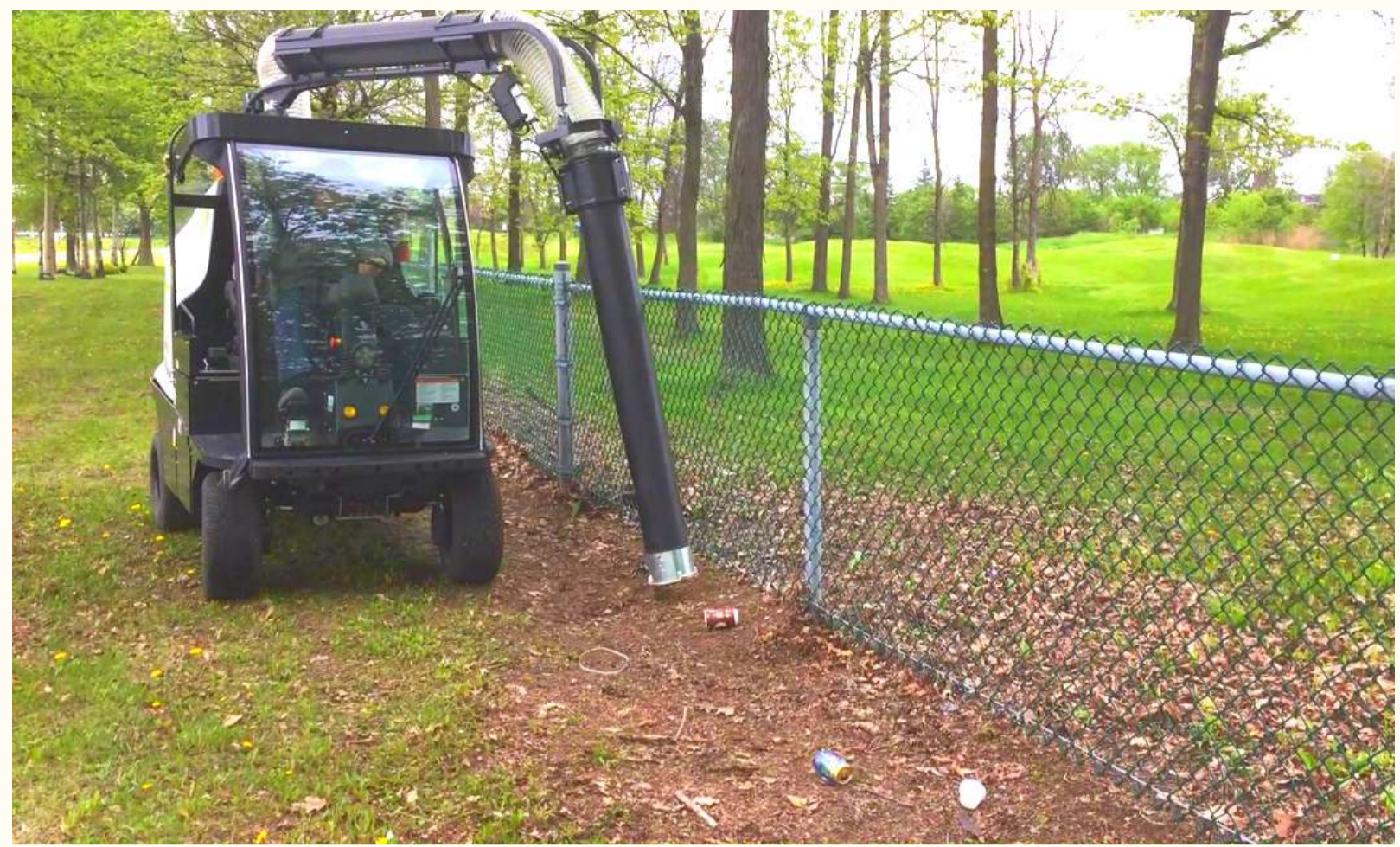
awarded contract vendor

www.madvac.com

Technical specs are subject to change without prior notice

From concrete to grass, the LR50 can tackle all types of urban terrain with ease

- Parks
- Sidewalks
- Bike & pedestrian lanes
- Parking lots
- Curb side
- Alleys
- Pathways
- Alongside buildings



Ergonomic 6-position robotic joystick allows effortless displacement of the boom



LR50 is the perfect all-terrain litter solution for

- Cities & municipalities
- Outdoor cleaning contractors
- Airports & seaports
- Transit authorities
- Healthcare services
- Distribution centers
- Shopping malls
- Educational & sports facilities
- Manufacturing facilities
- Amusement parks
- Casinos
- Military
- Correctional facilities





Built to suit your needs

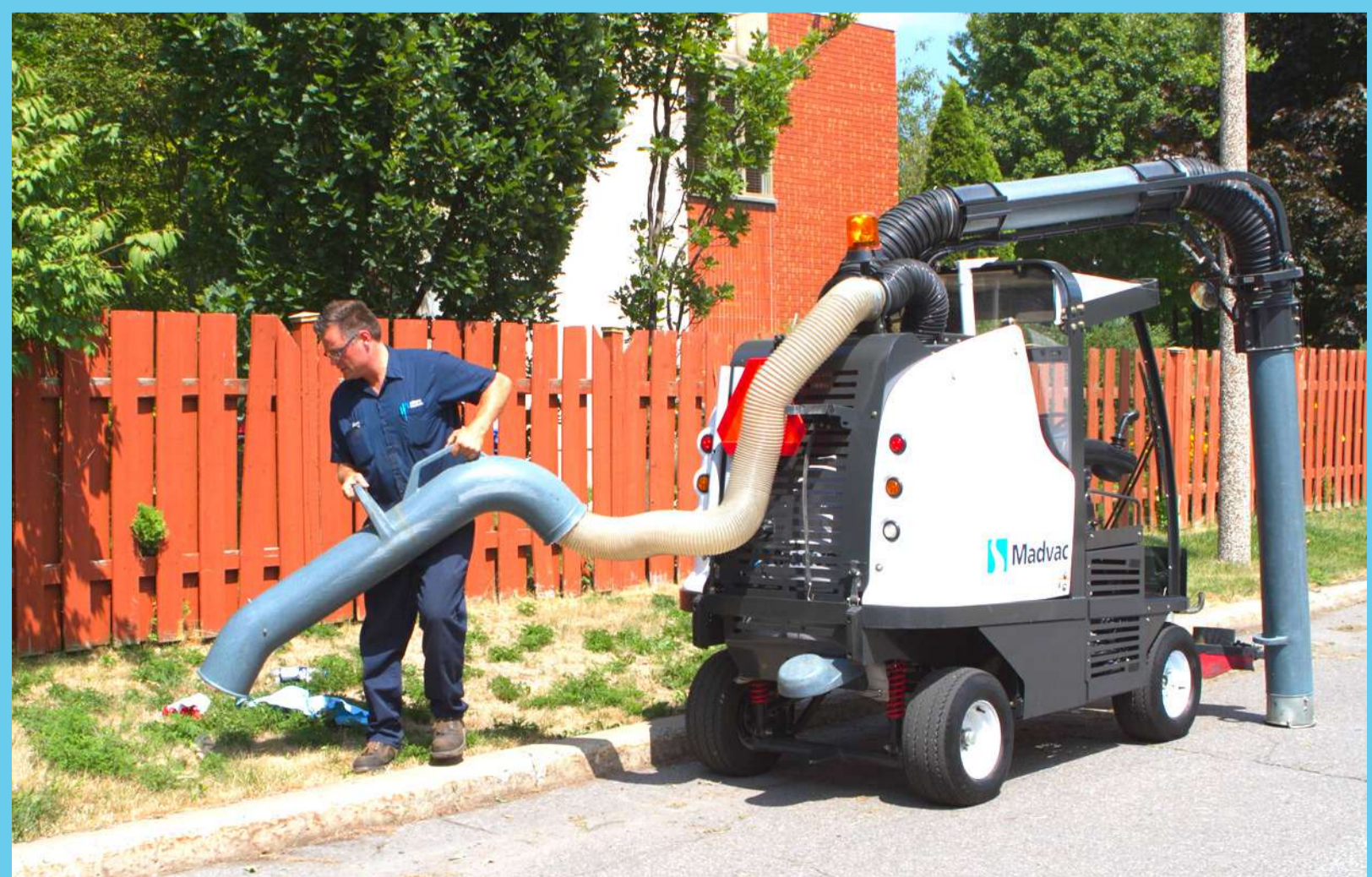
Configure the LR50 according to your specific requirements

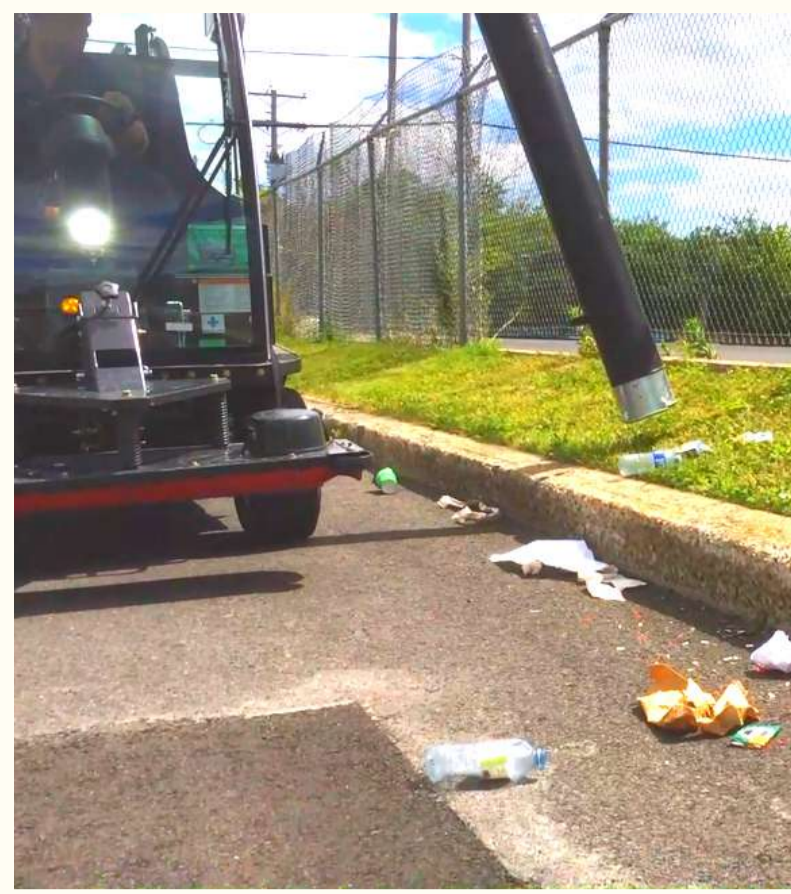
- 48 in. (1219 mm) vacuum head
- Retractable wander hose
- Litter collector bags or bagless debris system (Kevlar bin)
- Water mist system (additional dust control)
- Enclosed cab with heated or non-heated windshield and vinyl doors
- Heated seat
- Floor-mounted cab heater
- Fan for operator comfort
- Rear-view camera
- Tire flatproofing
- Fire extinguisher

Key Attributes

- Robotic vacuum arm with 6-position joystick makes litter picking easy and injury free;
- Closed cabin (vinyl doors) with climate control options for operator comfort;
- Productivity 6 times faster than manual litter picking;
- Collects litter dry, humid or wet;
- Effortless litter removal using 48 in. (1219 mm) wide vacuum head;
- 15 ft. (4.57 m) retractable wander hose for hard-to-reach areas;
- A CDL permit is not required to operate this machine;
- Fully street legal lighting;
- 10 to 12 year lifespan;
- OEM spare parts shipped within 48 hours;
- Madvac has a 30+ years track record of success – when your machine is due for replacement we'll still be around.

To request a quote www.madvac.com
 Diesel/Gas -> LR50 -> Request a quote





Madvac LR50

Data & Performance Information

Capacities

Fuel tank	10.2 gal. (39 L)
Hydraulic system	12.5 gal. (48 L)
Litter capacity	75 gal. (284 L)

Engine Data

Model	Kubota Diesel D1105-E4B (EPA Tier 4 Final)
Displacement	68.53 cu.in. (1123 cc)
Gross rated power	24.8 hp (18.5 kW) @3200 rpm
Legislation compliance	EPA Tier 4 Final
Air cleaner	2-stage Donaldson with restriction indicator

Litter Collection System

Type	Straight-through system compacts litter at 2:1 ratio
Container construction	16 gauge powder-coated steel
Vacuum hose	7 in. (178 mm)
Wander hose	Diameter: 6 in. (152 mm); length: 15 ft. (4.57 m)

Frame/Body

- Heavy gauge steel body on a welded 0.25 in. (6.35 mm) structural steel frame
- Electrostatic powder-coated paint

Dimensions

Width	48 in. (1219 mm)
Length	96 in. (2438 mm)
Height	104 in. (2641 mm)
Wheelbase	69 in. (1753 mm)
Ground clearance	10 in. (254 mm)

Vacuum System

Vacuum rating	1600 CFM
---------------	----------

Controls

Steering	Power assisted
Motion control	Heavy duty hydrostatic

Traction

Drive	Front wheel drive
Forward speed	12 mph (19 km/h)
Tires (all 4 wheels)	Regular 20.5 in. (521 mm); turf 20 in. (508 mm)

Brakes	Front hydrostatic brake; rear mechanical disc parking brake
Gradeability	11.3 degree (20%) with full & empty hopper

Curb weight	2910 lbs (1320 kg)
-------------	--------------------

Suspension

Front	Leaf spring
Rear	Leaf spring



Proud manufacturer of the Madvac product line

Telephone:

- 1-855-651-0444 (toll free - US/Canada)
- 1-450-651-0444 (international)

Fax: 450-651-0447

Email: info@exprolink.com

Address:

2170 Rue de la Province
Longueuil QC
Canada J4G 1R7

Website:

www.madvac.com
Sourcewell (US) and Canoe
(Canada) contract vendor
number: **093021-EXP**