

MINI SWEEPER

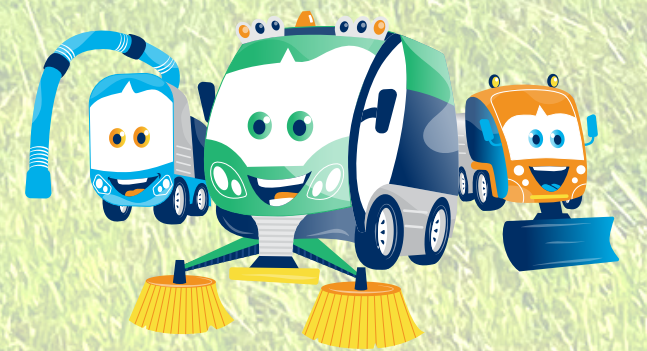
LS175



The "must-have" mini sweeper for your fleet

 **Madvac**®

Sourcewell   **canoe** procurement group of canada awarded contract vendor



www.madvac.com

Technical specs are subject to change without prior notice

Specifically designed to handle all the areas your large street sweeper can't access or manage

- Sidewalks
- Bike & pedestrian lanes
- Parking lots
- Curb side
- Alleys
- Pathways
- Alongside buildings
- Public markets



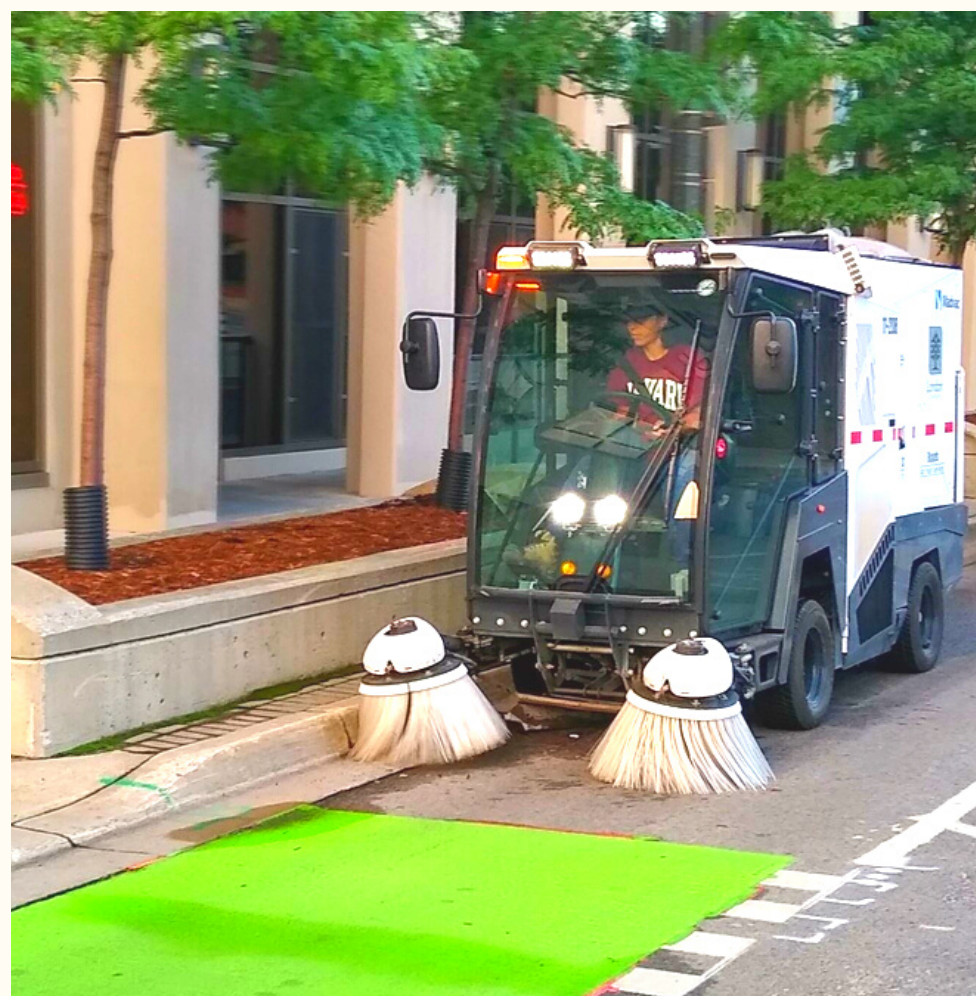
LS175 is the ultimate sweep / vacuum / wash mobile cleaning unit for

- Cities and municipalities
- Outdoor cleaning contractors
- Airports & seaports
- Transit authorities
- Healthcare services
- Distribution centers
- Shopping malls
- Educational & sports facilities
- Manufacturing facilities
- Amusement parks
- Casinos
- Military
- Correctional facilities



Key Attributes

- LS175 is the ONLY 48" wide closed cabin high-dump sweeper manufactured in North America. Everything is built according to North American standards;
- In the category 1.5 to 2 cu.yd. hopper capacity, LS175 is the lowest priced compact sweeper on the market;
- OEM spare parts shipped within 48 hours;
- 10 to 12 year lifespan will outlast most competitive models;



- A CDL is not required to operate this machine;
- Fully street legal lighting - safe and easy to use;
- For maintenance, LS175 offers unprecedented easy access to all critical components of the machine; (electrical box, manifolds, spool valves)
- Madvac has a 35+ years track record of success - when your machine is due for replacement we'll still be around.



Built to suit your needs

Configure the LS175 according to your specific requirements

- Stowed retractable wander hose
- Pressure washer gun
- Electric windshield defrost
- Heated mirrors
- Radio + CD + MP3 player system
- Fire extinguisher
- Tire flatproofing



**To request a quote www.madvac.com
Diesel / Gas -> LS175 -> Request a quote**



Madvac LS175 Data & Performance Information

Capacities

Fuel tank	21.1 gal. (80 L)
Hydraulic system	23.7 gal. (90 L) ISO46
Litter capacity	1.75 cu. yd. (1.34 m ³) (353 gal.)

Engine Data

Model	Hatz Tier 4 Final engine 3H50TIC 3 cyl. turbo with in-cab troubleshooting switch and light 91.54 cu. in. (1500 cc)
Displacement	58.5 HP (44.0 kW) @ 2800 RPM
Gross rated power	Donaldson 2-stage filtration system
Air cleaner	

Litter Collection System

Type	3-stage filtration process - water, rotary filter, bag (or cartridge)
Frame / body	Triangular frame tubing for engine 0.25" (6.35 mm) / 13 gauge fully welded / reinforced steel
Container material	Stainless steel
Dumping height	67 in. (1702 mm)
Container payload	2000 lbs (907 kg)
Power wash	Pressure washer 1800 psi (optional)

Vacuum System

Vacuum rating	2000 CFM
Remote vacuum	4 in. (101 mm) X 15 ft. (4.57 m) stowed wander hose (optional)

Traction

Drive	Rear wheel drive fully controlled by electric pedal
Forward speed	15 mph (24 km/h)
Tires	Radial 225 R 12 on all 4 wheels
Brakes	Front hydraulic standard brakes; rear hydrostatic brakes; rear mechanical parking disk brakes
Gradeability	11.3 deg. (20%)
Curb weight	Dry 5500 lbs (2495 kg)

Suspension

Front	Two coil springs / heavy duty shock absorbers
Rear	Two coil springs / heavy duty shock absorbers on axle

Sweep Gear

Brushes	Two brushes (independently joystick controlled) 25 in. (635 mm) diameter each polypropylene
Sweeping width	From 44 in. (1118 mm) to 80 in. (2032 mm)
Pickup nozzle	Electric raise/lower with polymer skate and wheels
Brush speed	0 RPM to 150 RPM
Brush arm	Floating and adjustable
In-cab	Brush speed & down pressure

Electrical

Lighting	2 headlights; 2 hazard lights; 4 work lights; 4 strobe lights; side panel light; brakes, turn, reverse signals, SMV sign
Instruments	Hour meter, fuel gauge, no water indicator, brake indicator, left turn signal, engine oil indicator, battery indicator, engine temperature indicator, right turn signal, glow plug indicator, engine maintenance required

Cab

Cab	200-degree cab vision
Windshield	Full windshield laminated glass
Windows	Full ventilation, pivoting side windows that open each side
Light	Interior dome light
Heating / AC	HVAC unit
Defrost	Windshield heated micro filament (optional) Heated mirrors (optional)
Seat	Adjustable suspended air seat with 2-point seat belt

Dimensions

Width	48 in. (1219 mm)
Length	136 in. (3454 mm)
Height	86 in. (2184 mm) with bag filtration system 88 in. (2235 mm) with cartridge filtration system
Wheelbase	65 in. (1651 mm)
Ground clearance	8.5 in. (216 mm)

Hydraulic System

Drive system	Heavy duty hydrostatic drive with infinite movement engine following RPM with anti-stall
--------------	--



Proud manufacturer of the Madvac product line

Telephone:

- 1-855-651-0444 (toll free - US/Canada)
- 1-450-651-0444 (international)

Fax: 450-651-0447

Email: info@exprolink.com

Address: 2170 Rue de la Province, Longueuil QC, Canada J4G 1R7

Website: www.madvac.com

Sourcewell (US) and Canoe (Canada) contract vendor number: 093021-EXP