

**HAAKER**

**EQUIPMENT COMPANY**

*Your partner for environmental cleaning equipment.*

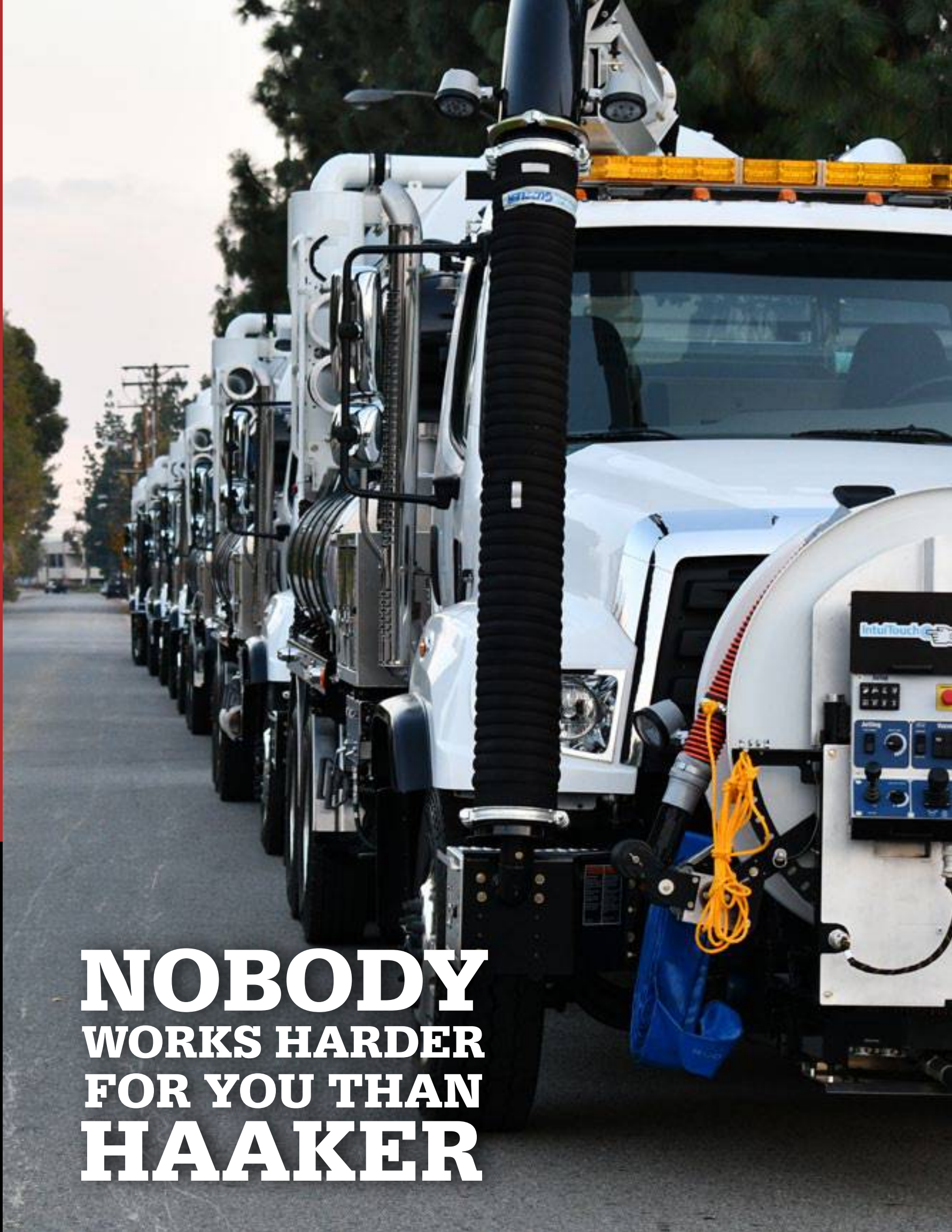


FAMILY OWNED  
& OPERATED

OVER  
**50**  
YEARS

COMMITTED  
  
TO OUR  
CUSTOMERS

We are committed to delivering the highest quality products and services through a team empowered to meet and exceed customer expectations.



**NOBODY  
WORKS HARDER  
FOR YOU THAN  
HAAKER**



# VACTOR®

Subsidiary of Federal Signal Corporation



- Vactor 2100i PD**
- Up to 15 yd debris body
  - Up to 100 gpm pump
  - Up to 1,500 gallons of water
  - Wireless controls



- Vactor 2100i Fan**
- 7" touch screen control
  - Includes controls and viewing screen for camera, lighting, and recirculation
  - PTO/Transfer case activation
  - One-touch engagement
  - Articulating controls



- Vactor iMPACT**
- Compact combination sewer truck
  - PD blower
  - 3.5 yd debris body
  - 500 gallon water tanks
  - Short wheel base
  - Up to 40 gpm at 2500 psi



## IntuiTouch®

- 7" touch screen control features backlit tactile buttons
- One-Touch engagement to activate PTO and transfer case
- Operator can view the current operating mode, recirculation status, flows, pressures, and more

**Scan Here**  
to learn more about our Vactor  
Sewer Cleaning Equipment





# ENVIROSIGHT



### RovverX

- Robotic sewer inspection camera
- 6" to 96" variable configurations
- Standard wireless remote control
- 12 quick change design wheel types
- Proportional joystick to control speed & direction
- 1640' crawl range
- HD available



### Jetscan 2.0

- Sewer jetting HD video nozzle
- Assess pipe conditions without a camera truck
- Safety from hazards like toxic discharges & gas line cross bores



### Quickview 360

- One handed operation pole camera
- 3D scanning of enclosed spaces too deteriorated for crawler
- Wireless tablet operation, viewing and video storage



### SAT II Lateral Launch

- Detachable 360° camera
- Faster cross bore inspections
- Reduce downtime
- 984' crawl distance



### Verisight Pro Plus

- 330' push camera
- 90 hours of video recording
- High resolution PAL imager
- Self-leveling axial camera



## Take EnviroSight On The Go

Many of our products are designed to be portable for your convenience.

Scan Here 

to learn more



### WinCan

Wastewater Inspection Software

- AI-enhanced, cloud-enabled asset management software
- Manage your wastewater resources and assets in real time
- Find defects and plan rehab with AI
- Easy-to-use, map-based interface
- Consolidates all your asset data on a single platform
- Rehab planning module for automatic reports and budgets





**Broom Bear**

- Mechanical street sweeper
- 4.5 yd hopper
- Single engine
- Variable high dump



**RegenX**

- Single engine or dual engine
- Large-capacity hopper
- PM-10 compliant
- 50° dump angle



**Broom Badger**

- Compact mechanical street sweeper
- No CDL license required
- Low-profile
- 10 ft sweeping path



**Crosswind 1**

- Regenerative air sweeper
- 12 ft sweeping path
- Cab-over or conventional chassis
- Single engine



**Elgin Squeegee Conveyor**

- Three-piece design for easy service without removing complete assembly
- Abrasion-resistant steel floor



**Elgin Chevron Belt Conveyor**

- Improved hopper fill
- Heavy-duty poly/nylon belt construction resists stretching
- Direct-drive hydraulic motor

Scan Here

to view our full Elgin product line





# TRUVAC<sup>®</sup> HAAKER

by Vector Mfg., Inc. UNDERGROUND EQUIPMENT



### Full-Size / Mid-Size 824

- 8" vacuum system
- Extendable boom (22' reach, 360° rotation)
- PD blower rated 18" HG / 4,970 cfm
- 50° tilting 12 yd debris body



### FLXX

- Extendable or telescopic boom
- 10 yd debris body
- 800 gallons of fresh water
- 17,000 lb payload capacity



### Paradigm

- Class C vehicle (No CDL required)
- 6" vacuum system
- Extendable boom (14'6" reach, 210° rotation)
- PD blower rated 15" HG / 2,200 cfm
- 8 gpm at 2,500 psi



### Did You Know?

- Every six minutes, an underground utility line is damaged.
- There are more than 20 million miles of underground utilities beneath our feet! Digging around utility lines is dangerous and puts entire communities at risk. Let us help you dig smart, and dig safe, with TRUVAC!



Scan Here →  
to view our full line of TRUVAC  
and other underground equipment





Digging Safely  
Is What  
We Do



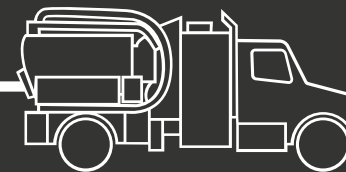
Haaker.com  
800.200.3432



Paradigm

675  
gallons

~~CDL~~





# Rentals



**Broom Bear  
Broom Sweeper**



**RegenX  
Air Sweeper**



**TRUVAC HXX  
Hydro Excavation Truck**



**Vactor 2100i PD  
Sewer Cleaner**



**Nautilus  
Sweeper-Scrubber**



**SW8000  
Sweeper**



**Walk-Behind  
Scrubber**



**Mounted Pressure  
Washer Trailer**



Well-Maintained  
New & Used Equipment



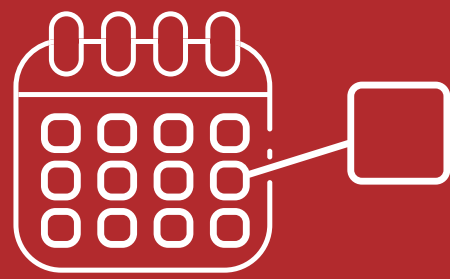
Trusted Partner



Over 50 Years  
In The Industry

**Scan Here**

to schedule your  
next rental



**Day | Week | Month**

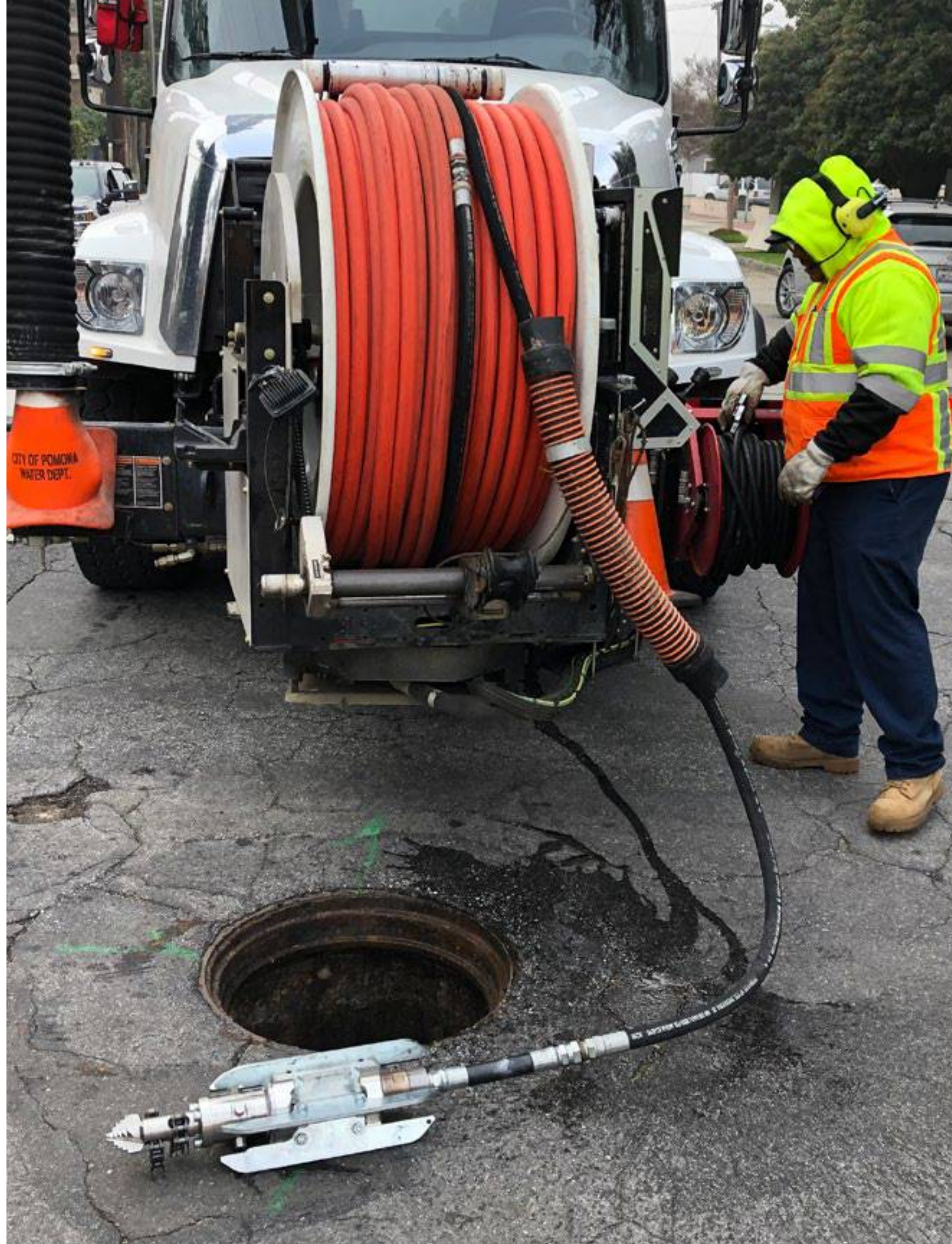


# Need Parts?

We've Got You!

- KEG
- RKI
- Sonetics
- Southland Tools
- Nozzles
- Envirosight
- Federal Signal Lighting

**800.200.3432**



# Sonetics

Wireless Headsets



Two-Way  
Communication

Safety



Passive Noise  
Reduction

Scan Here

to learn more





# Scan Here

to schedule your next service



## Skilled In Service

Let our team of trained technicians help you keep your machines running at peak performance!



## Training & Support

Scan the QR code to get access to YouTube videos with hours of detailed training

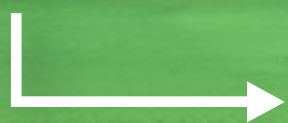


# “Keep It Clean With Total Clean”

If you're looking for more, we offer you a total solution to all your cleaning needs. Whether it be indoor or outdoors, we have the products you need for every job!

Scan Here

to see more from Total Clean



Visit us online to learn more  
[TotalCleanEquip.com](http://TotalCleanEquip.com)



*Tulare, CA*

*Los Angeles, CA*

*San Diego, CA*

*Las Vegas, NV*

*Phoenix, AZ*

# **HAAKER**

**EQUIPMENT COMPANY**

Visit us online: [www.haaker.com](http://www.haaker.com)

**VACTOR**  
VACTOR MFG, INC  
1-815-672-3171  
[WWW.VACTOR.COM](http://WWW.VACTOR.COM)

# HAAKER

EQUIPMENT COMPANY



**Haaker.com | 800.200.3432**

**LOS ANGELES**

2070 North White Ave.  
La Verne, CA 91750  
(909) 598-2706

**SAN DIEGO**

9465 Mission Park Pl.  
Santee, CA 92071  
(619) 569-1946

**CENTRAL VALLEY**

4490 South K St.  
Tulare, CA 93274  
(559) 220-8897

**NEVADA**

4645 Copper Sage St.  
Las Vegas, NV 89115  
(702) 639-0156

**ARIZONA**

2940 West Virginia Ave  
Phoenix, AZ 85009  
(602) 266-8214