

HAAKER

EQUIPMENT COMPANY



PARTS & TOOLS CATALOG
"Nobody Works Harder For You Than Haaker"

Victor Valley, California | Victor 2100i




FAMILY OWNED
& OPERATED

OVER
50
YEARS

COMMITTED



TO OUR
CUSTOMERS

We are committed to delivering the highest quality products and services through a team empowered to meet and exceed customer expectations.



ABOUT US

For over 50 years, Haaker Equipment Company has been at the forefront of industrial cleaning equipment and service. As a top-ranking producer, our objective is to provide our customers with quality products and complete support services for their many needs. We proudly provide municipal and industrial cleaning equipment from street sweepers, sewer cleaners, industrial floor scrubbers, pressure washers, and industrial vacuums. We support California, Nevada, and Arizona with parts, rentals, service, and sales through trusted brands such as Elgin, Vector, TruVac, KEG, Sonetics, Envirosight, PowerBoss, Columbia, HydroTek, Stetco, Harben, and Cimline.

CONTENTS

SEWER TOOLS & PARTS 04

Jetting - Vacuum Tools & Accessories	04
Nozzle Extensions	05
Puma Tools.....	07
Vacuum Traps.....	09
Valves & Swivels.....	09
Adapter Rods	10
Accessory Tools.....	11
Pull Out & Turning Tool.....	11
Special Boring Tools.....	11
Cleaning Tools	12
Root Saws & Blades.....	12

SEWER NOZZLES 18

HYDRO EXCAVATION 26

Nozzles.....	27
Ring-O-Matic.....	30
AirSpade.....	32

TRAILER JETTING - HARBEN 34

ASPHALT REPAIR - CIMLINE 36

BUCKET TRUCKS - STETCO 38

WORK TRUCKS - SWITCH-N-GO 40

LINE LOCATORS - VIVAX 42



PIPE INSPECTION - ENVIROSIGHT 44

GAS DETECTION - RKI 46

WIRELESS HEADSETS - SOMETICS 50

SAFETY & WORK LIGHTS - WHELEN 54

WORK LIGHTS - FEDERAL SIGNAL 62

SWEEPER PARTS 68

SERVICE & TRAINING 70

Service 70

Training 73

RENTALS 74

Haaker Rentals 74

Total Clean Rentals 76

PRESSURE WASHERS 78

FLOOR SCRUBBERS & SWEEPERS 80

UTILITY VEHICLES 84

ELECTRIC EQUIPMENT 86





Haaker Equipment Company's objective is to provide our customers with quality products and total support services. We offer a variety of tools and accessories for all your sewer and storm drain maintenance operations. We are proud to offer the top quality products you need from trusted partners like Southland Tools.

Jetting - Vacuum Tools and Accessories

Heavy-Duty Fang Cutter



Part Numbers:

PFHD-6	6"	PFHD-12	12"
PFHD-8	8"	PFHD-15	15"
PFHD-10	10"	PFHD-18	18"

Tiger Tail With Removable Rope & Clip



Part Numbers:

SJS-1
SJS-2

Upper Manhole Aluminum Nylon Roller Guide



Part Numbers:

SAMR-1

Upper Manhole Aluminum Steel Roller Guide



Part Numbers:

SASR-1

Double Sided Pick & Manhole Hook



Part Numbers:

POOK

Call us today or visit us online to view our full line of products!

Boom Tube Roller Guide



Part Numbers:

CTR-6
CTR-8

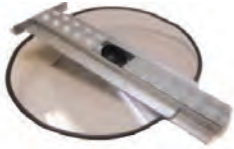
Hydro-Vac Handle



Part Numbers:

HYH-6
HYH-8

Removable Lexan Splash Covers



Part Numbers:

SSO-24
SSC-24

HD Lower Manhole Roller Guide Shoe



Part Numbers:

SHDS-1

Puma Hydraulic Root Saw Cutter Kit



Part Numbers:

SHYK-1

Puma Root Cutters Skid - 3 Rails



Part Numbers:

SS-6	SS-12
SS-8	SS-15
SS-10	SS-18

Deep Manhole Tube Holder



Part Numbers:

DTH-8
DTH-6

Hydraulic Root Cutter Standard Saw Hub



Part Numbers:

RSH-1A
RSH-1B

Diamond Tap Cutters



Hydraulic Root Cutter Heavy-Duty Saw Hub



Part Numbers:

3BHC-1
3BHC-2

Shamrock Style Root Cutters Skid - 3 Rails



Part Numbers:

STSS-6	STSS-18
STSS-8	STSS-20
STSS-10	STSS-22
STSS-12	STSS-24
STSS-15	

Nozzle Extensions

Heavy-Duty Tube Style Extensions



Part Numbers:

TSE-3/4
TSE-1

Sand Traps With 25' Rope Included



Part Numbers:

SST-6	6"	SST-15	15"
SST-8	8"	SST-18	18"
SST-10	10"	SST-20	20"
SST-12	12"		

Finned Extension Nozzles



FE-41	4"	1" 4-Finned Nozzle Extension
FE-61	6"	1" 4-Finned Nozzle Extension
FE-81	8"	1" 4-Finned Nozzle Extension
FE-101	10"	1" 4-Finned Nozzle Extension
FE-121	12"	1" 4-Finned Nozzle Extension
FE-151	15"	1" 4-Finned Nozzle Extension

FE-434	4"	3/4" 4-Finned Nozzle Extension
FE-634	6"	3/4" 4-Finned Nozzle Extension
FE-834	8"	3/4" 4-Finned Nozzle Extension
FE-1034	10"	3/4" 4-Finned Nozzle Extension
FE-1234	12"	3/4" 4-Finned Nozzle Extension

FE-412	4"	1/2" 4-Finned Nozzle Extension
FE-612	6"	1/2" 4-Finned Nozzle Extension
FE-812	8"	1/2" 4-Finned Nozzle Extension

Wire Extension Nozzles



WNE-41	4"	1" 6-Wire Nozzle Extension
WNE-61	6"	1" 6-Wire Nozzle Extension
WNE-81	8"	1" 6-Wire Nozzle Extension
WNE-101	10"	1" 6-Wire Nozzle Extension
WNE-121	12"	1" 6-Wire Nozzle Extension

WNE-434	4"	3/4" 6-Wire Nozzle Extension
WNE-634	6"	3/4" 6-Wire Nozzle Extension
WNE-834	8"	3/4" 6-Wire Nozzle Extension
WNE-1034	10"	3/4" 6-Wire Nozzle Extension
WNE-1234	12"	3/4" 6-Wire Nozzle Extension

WNE-412	4"	1/2" 6-Wire Nozzle Extension
WNE-612	6"	1/2" 6-Wire Nozzle Extension

Wire Nozzle Extension



W4-1	4"	1" 4-Wire Nozzle Extension
W6-1	6"	1" 4-Wire Nozzle Extension
W8-1	8"	1" 4-Wire Nozzle Extension
W10-1	10"	1" 4-Wire Nozzle Extension
W12-1	12"	1" 4-Wire Nozzle Extension

W4-34	4"	3/4" 4-Wire Nozzle Extension
W6-34	6"	3/4" 4-Wire Nozzle Extension
W8-34	8"	3/4" 4-Wire Nozzle Extension
W10-34	10"	3/4" 4-Wire Nozzle Extension
W12-34	12"	3/4" 4-Wire Nozzle Extension

W4-12	4"	1/2" 4-Wire Nozzle Extension
W6-12	6"	1/2" 4-Wire Nozzle Extension
W8-12	8"	1/2" 4-Wire Nozzle Extension
W10-12	10"	1/2" 4-Wire Nozzle Extension

Football Nozzle Extension



NFL-41	4"	1" 4-Football Nozzle Extension
NFL-61	6"	1" 4-Football Nozzle Extension
NFL-81	8"	1" 4-Football Nozzle Extension
NFL-101	10"	1" 4-Football Nozzle Extension
NFL-121	12"	1" 4-Football Nozzle Extension

NFL-434	4"	3/4" 4-Football Nozzle Extension
NFL-634	6"	3/4" 4-Football Nozzle Extension
NFL-834	8"	3/4" 4-Football Nozzle Extension
NFL-1034	10"	3/4" 4-Football Nozzle Extension
NFL-1234	12"	3/4" 4-Football Nozzle Extension

NFL-412	4"	1/2" 4-Football Nozzle Extension
NFL-612	6"	1/2" 4-Football Nozzle Extension
NFL-812	8"	1/2" 4-Football Nozzle Extension
NFL-1012	10"	1/2" 4-Football Nozzle Extension

Wheeled Nozzle Extension



WE-61	6"	1" Wheeled Nozzle Extension
WE-81	8"	1" Wheeled Nozzle Extension
WE-101	10"	1" Wheeled Nozzle Extension
WE-121	12"	1" Wheeled Nozzle Extension
WE-151	15"	1" Wheeled Nozzle Extension



WE-634	6"	3/4" Wheeled Nozzle Extension
WE-834	8"	3/4" Wheeled Nozzle Extension
WE-1034	10"	3/4" Wheeled Nozzle Extension
WE-1234	12"	3/4" Wheeled Nozzle Extension
WE-1534	15"	3/4" Wheeled Nozzle Extension

Short 10-Legged Proofer



S-6	6"
S-7.5	7.5"
S-8	8"
S-9.5	9.5"
S-10	10"

S-11.5	11.5"
S-12	12"
S-15	15"
S-18	18"

Long 10-Legged Removable Proofer



L-6	6"
L-7.5	7.5"
L-8	8"
L-9.5	9.5"
L-10	10"

L-11.5	11.5"
L-12	12"
L-15	15"
L-18	18"



Puma Tools

Fiberglass Poles Scoopa

Part Numbers:



SC-6	6"	SC-10	10"
SC-8	8"	SC-12	12"

Fiberglass/Wood Pole Curved Chopper

Part Numbers:



LC-9

Fiberglass/Wood Pole 9" Long Improved Grabber

Part Numbers:



HG-1

8" Steel Wire Brush

Part Numbers:



SBR-8

8" Wide 4-Pronged Debris Grabber

Part Numbers:



4PG-1
3PG-1

Craw for Attaching to Poles & Instructions

Part Numbers:



CRW-1

Camera Gaffing Hook

Part Numbers:



CAM-1

9" Diameter Catch Basin Spoon

Part Numbers:



SC-6	6"	PS-1
SC-8	8"	
SC-10	10"	
SC-12	12"	

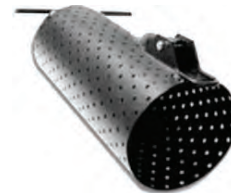
Magnetic Valve Box & Overall Metal Grabber

Part Numbers:



SMAG-1

Debris Baskets & Catchers



DBR-6	6"	Debris Basket with Rope
DBR-8	8"	Debris Basket with Rope
DBR-10	10"	Debris Basket with Rope
DBR-12	12"	Debris Basket with Rope
DBR-15	15"	Debris Basket with Rope
DBR-18	18"	Debris Basket with Rope
DBR-24	24"	Debris Basket with Rope

DBR-6S	6"	Debris Grit Catchers with Rope
DBR-8S	8"	Debris Grit Catchers with Rope
DBR-10S	10"	Debris Grit Catchers with Rope
DBR-12S	12"	Debris Grit Catchers with Rope
DBR-15S	15"	Debris Grit Catchers with Rope
DBR-18S	18"	Debris Grit Catchers with Rope
DBR-24S	24"	Debris Grit Catchers with Rope

DC-6	6"	Debris Cylinder for 6" Pipe
DC-8	8"	Debris Cylinder for 8" Pipe
DC-10	10"	Debris Cylinder for 10" Pipe
DC-12	12"	Debris Cylinder for 12" Pipe



DB-6S	6"	Debris Grit Basket for Connector
DB-8S	8"	Debris Grit Basket for Connector
DB-10S	10"	Debris Grit Basket for Connector
DB-12S	12"	Debris Grit Basket for Connector
DB-15S	15"	Debris Grit Basket for Connector
DB-18S	18"	Debris Grit Basket for Connector
DB-24S	24"	Debris Grit Basket for Connector

DB-6	6"	Debris Basket for Fiberglass Poles
DB-8	8"	Debris Basket for Fiberglass Poles
DB-10	10"	Debris Basket for Fiberglass Poles
DB-12	12"	Debris Basket for Fiberglass Poles
DB-15	15"	Debris Basket for Fiberglass Poles
DB-18	18"	Debris Basket for Fiberglass Poles
DB-24	24"	Debris Basket for Fiberglass Poles

FT-6	6"	Flat Trap Basket
FT-8	8"	Flat Trap Basket
FT-10	10"	Flat Trap Basket
FT-12	12"	Flat Trap Basket
FT-15	15"	Flat Trap Basket

Catch Basin Spoons & Poles



FS-6	6"	Catch Basin Spoon
FS-12	12"	Catch Basin Spoon
FS-18	18"	Catch Basin Spoon



PS-6	6"	Thick Ash Handle and Catch Basin Spoon
PS-12	12"	Thick Ash Handle and Catch Basin Spoon
PS-18	18"	Thick Ash Handle and Catch Basin Spoon



GWCT		Long Steel Grabber with Craw Action Telescopic Pole
------	--	---



STD-6	6'	Single Male X Female Pole
STD-3	3'	Single Male X Female Pole
STD-18	18'	Set of 2 Male X Female Pole with One Rubber End
STD-21	21'	Set of 2 Male X Female Pole
STD-24	24'	Set of 3 Male X Female Pole with One Rubber End



STD-6ST	6'	Single Male X Female Pole
STD-3ST	3'	Single Male X Female Pole
STD-24ST	24'	Set of 3 Male X Female Pole - One Rubber End



FF-3	3'	Single Male X Female Pole
FF-6	6'	Single Male X Female Pole
FF-24	18'	Set of 3 Male X Female Pole with One Rubber End
FF-21	21'	Set of 3 Male X Female Pole with One Rubber End
FF-6R	24'	Single Female Pole



WP-6	6'	Poplar Wood Pole - Male X Female Ends
WP-8	8'	Ash Wood Pole - Male X Female Ends

Puma Grabber With 8" Jaws



Part Numbers:

PMA-6S	6"
PMA-8S	8"
PMA-10S	10"
PMA-12S	12"
PMA-15S	15"
PMA-18S	18"

Handy Clam With Small 12" Bucket



Part Numbers:

SHC-6	6'	SHC-16	16'
SHC-8	8'	SHC-18	18'
SHC-10	10'	SHC-20	20'
SHC-12	12'	SHC-25	25'

Vacuum Traps - Available With Grit Covers

Aquatech Type Female End Vac-Trap



Part Numbers:

AT-6	6"
AT-8	8"
AT-10	10"
AT-12	12"
AT-15	15"
AT-18	18"
AT-24	24"

Vector Suction Tube Flat Flange Vac-Trap



Part Numbers:

BT-6	6"
BT-8	8"
BT-10	10"
BT-12	12"
BT-15	15"
BT-18	18"
BT-24	24"

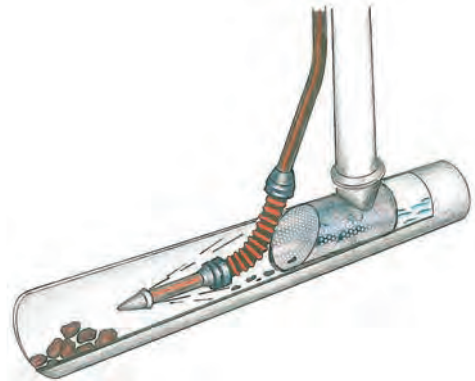
Vector Camel Type Female End Vac-Trap



Part Numbers:

CT-6	6"
CT-8	8"
CT-10	10"
CT-12	12"
CT-15	15"
CT-16	18"
CT-17	24"

Vac-Traps allow water to stay in the sewer line while removing debris. This carefully designed tool will save you time and energy with an installation that is fast and easy.



Valves, Swivels, Stake Roller & Plumbers Rod

2-Way Ball Valve - 5000 PSI



Part Numbers:

BHK-3/4- 2-S-234
BHK-1-3 - S-31
BHK-3-3/4- S-334

90° Swivel



Part Numbers:

SS-34E
SS-1E
SS-12E

Stake Roller for Hose



Part Numbers:

SSR-5

Plumbers Rod





Adapter Rods



Part Numbers:

AR-1-SS	5/16"	Super Short
AR-1-2SS	3/8"	Super Short



Part Numbers:

AR-1-1	5/16"	Adapter Rod
AR-1-2	3/8"	Adapter Rod

Blue Premium Rods



Part Numbers:

STR-1-1	5/16" X 36"
STR-1-2	5/16" X 39"
STR-1-3	5/16" X 48"
STR-1-4	5/16" X 60"
STR-1-5	5/16" X 72"



Part Numbers:

STR-1-6	3/8" X 36"
STR-1-7	3/8" X 39"
STR-1-8	3/8" X 48"
STR-1-9	3/8" X 60"
STR-1-10	3/8" X 72"

Flexichrome Silver Rods



Part Numbers:

STR-1-1	5/16" X 36"	STR-1-6	3/8" X 36"
STR-1-2	5/16" X 39"	STR-1-7	3/8" X 39"
STR-1-3	5/16" X 48"	STR-1-8	3/8" X 48"
STR-1-4	5/16" X 60"	STR-1-9	3/8" X 60"
STR-1-5	5/16" X 72"	STR-1-10	3/8" X 72"

Quick Couple Rods



All 5/16" rods are available with quick connect and disconnect spring-loaded pin couplings

Accessory Tools

Pick Up Tools



Part Numbers:

P1-1	5/16"
P1-3	3/8"
P1-3	3/8"
P1-4	3/8"

Spear Head



Part Numbers:

B2-1	2"	2" Spear Head - 5/16" Adapter Rod & Coupling
B2-2	2"	2" Spear Head - 3/8" Adapter Rod & Coupling
B2-3	4"	4" Spear Head - 5/16" Adapter Rod & Coupling
B2-4	4"	4" Spear Head - 3/8" Adapter Rod & Coupling

Assembly Tools



Part Numbers:

T1-1	5/16"	Wrench
T1-2	3/8"	Wrench



Part Numbers:

T1-3	5/16"	Assembly Turning Handle
T1-4	3/8"	Assembly Turning Handle

Pull Out and Turning Tools



Part Numbers:

T3-1	5/16"	Pull Out Tool
T3-2	3/8"	Pull Out Tool



T4-1	5/16"	Twisting Handle
T4-2	3/8"	Twisting Handle



Part Numbers:

T5-1	5/16"	Bar Turning Handle
T5-1	3/8"	Bar Turning Handle



Part Numbers:

T11	5/16"	Turning Rod
T12	5/16"	Turning Rod



Part Numbers:

T13	3/8"	Rod Turning Ratchet
T14	3/8"	Rod Turning Ratchet

Special Boring Tools



Part Numbers:

T6-1	5/16"	Loop Swivel
T6-2	3/8"	Loop Swivel



Part Numbers:

T7-1	5/16"	Sand Leader - Adapter Rod & Couplings
T7-2	3/8"	Sand Leader - Adapter Rod & Couplings



Part Numbers:

T9-1	5/16"	Bullet Tool
T9-2	3/8"	Bullet Tool



Part Numbers:

T10-1	5/16"	Pilot Bullet Tool - Pullout Swivel
T10-2	3/8"	Pilot Bullet Tool - Pullout Swivel



Part Numbers:

T15-1	5/16"	"Winters" Root Saw Coupling
T15-2	3/8"	"Winters" Root Saw Coupling



Part Numbers:

LL-1	5/16"	Lateral Locator
LL-2	3/8"	Lateral Locator

Round Wire Corkscrews



Part Numbers:

F1-1	1-1/2" - 5/16"	F2-1	2" - 5/16"	F3-1	3" - 5/16"	F4-1	3-1/2" - 5/16"	F5-1	5" - 5/16"	F6-1	6" - 5/16"
F1-2	1-1/2" - 3/8"	F2-2	2" - 3/8"	F3-2	3" - 3/8"	F4-2	3-1/2" - 3/8"	F5-2	5" - 3/8"	F6-2	6" - 3/8"

Double Round Wire Corkscrews



Part Numbers:

FD3-1	3"	FD4-2	4"
FD3-2	3"	FD6-1	6"
FD4-1	4"	FD6-2	6"

Sand Corkscrews



Part Numbers:

G-3-1	3"	Use with 5/16" Rod
G-3-2	3"	Use with 3/8" Rod

Cleaning Tools



Part Numbers:

A2-1	2"	Augers - 5/16" Rod
A2-2	2"	Augers - 3/8" Rod
A3-1	3"	Augers - 5/16" Rod
A3-2	3"	Augers - 3/8" Rod
A4-1	4"	Augers - 5/16" Rod
A4-2	4"	Augers - 3/8" Rod
A5-1	5"	Augers - 5/16" Rod

A5-2	5"	Augers - 3/8" Rod
A6-1	6"	Augers - 5/16" Rod
A6-2	6"	Augers - 3/8" Rod
A8-1	8"	Augers - 5/16" Rod
A8-2	8"	Augers - 3/8" Rod
A10-1	10"	Augers - 5/16" Rod
A10-2	10"	Augers - 3/8" Rod



Part Numbers:

E2-1	2"	Square Bar Corkscrew - 5/16" Rod
E2-2	2"	Square Bar Corkscrew - 3/8" Rod
E3-1	3"	Square Bar Corkscrew - 5/16" Rod
E3-2	3"	Square Bar Corkscrew - 3/8" Rod
E4-1	4"	Square Bar Corkscrew - 5/16" Rod
E4-2	4"	Square Bar Corkscrew - 3/8" Rod
E5-1	5"	Square Bar Corkscrew - 5/16" Rod
E5-2	5"	Square Bar Corkscrew - 3/8" Rod
E6-1	6"	Square Bar Corkscrew - 5/16" Rod

E6-2	6"	Corkscrew - 3/8" Rod
E8-1	8" Std.	Corkscrew - 5/16" Rod
E8-2	8" Std.	Corkscrew - 3/8" Rod
E2-4	8" H.D.	Corkscrew - 5/16" Rod
E2-5	8" H.D.	Corkscrew - 3/8" Rod
E10-1	10"	Corkscrew - 5/16" Rod
E10-2	10"	Corkscrew - 3/8" Rod
E12-1	12"	Corkscrew - 5/16" Rod
E12-2	12"	Corkscrew - 3/8" Rod

Root Saws



Part Numbers:

SCRS-12	12"	Concave Heavy-Duty Saw - 3 Spokes
SCRS-12	15"	Concave Heav-Duty Saw - 3 Spokes
SCRS-12	18"	Concave Heavy-Duty Saw - 3 Spokes

SCRS-12	20"	Concave Heavy-Duty Saw - 3 Spokes
SCRS-12	22"	Concave Heavy-Duty Saw - 3 Spokes
SCRS-12	24"	Concave Heavy-Duty Saw - 3 Spokes



Part Numbers:

CRS-3-1	3"	Concave Root Saw - 5/16" Rod
CRS-3-2	3"	Concave Root Saw - 3/8" Rod
CRS-4-1	4"	Concave Root Saw - 5/16" Rod
CRS-4-2	4"	Concave Root Saw - 3/8" Rod
CRS-5-1	5"	Concave Root Saw - 5/16" Rod
CRS-5-2	5"	Concave Root Saw - 3/8" Rod
CRS-6-1	6"	Concave Root Saw - 5/16" Rod
CRS-6-2	6"	Concave Root Saw - 3/8" Rod
CRS-8-1	8"	Concave Root Saw - 5/16" Rod
CRS-8-2	8"	Concave Root Saw - 3/8" Rod

CRS-10-1	10"	Concave Root Saw - 5/16" Rod
CRS-10-2	10"	Concave Root Saw - 3/8" Rod
CRS-12-1	12"	Concave Root Saw - 5/16" Rod
CRS-12-2	12"	Concave Root Saw - 3/8" Rod
CRS-15-1	15"	Concave Root Saw - 5/16" Rod
CRS-15-2	15"	Concave Root Saw - 3/8" Rod
CRS-18-1	18"	Concave Root Saw - 5/16" Rod
CRS-18-2	18"	Concave Root Saw - 3/8" Rod
CRS-20-1	20"	Concave Root Saw - 5/16" Rod
CRS-20-2	20"	Concave Root Saw - 3/8" Rod



Part Numbers:

FRS-3-1	3"	Standard Flat Root Saw - 3/8" Rod
FRS-3-2	3"	Standard Flat Root Saw - 5/16" Rod
FRS-4-1	4"	Standard Flat Root Saw - 3/8" Rod
FRS-4-2	4"	Standard Flat Root Saw - 5/16" Rod
FRS-6-1	6"	Standard Flat Root Saw - 3/8" Rod
FRS-6-2	6"	Standard Flat Root Saw - 5/16" Rod
FRS-8-1	8"	Standard Flat Root Saw - 3/8" Rod
FRS-8-2	8"	Standard Flat Root Saw - 5/16" Rod
FRS-10-1	10"	Standard Flat Root Saw - 3/8" Rod

FRS-10-2	10"	Standard Flat Root Saw - 5/16" Rod
FRS-12-1	12"	Standard Flat Root Saw - 5/16" Rod
FRS-12-2	12"	Standard Flat Root Saw - 3/8" Rod
FRS-15-1	15"	Standard Flat Root Saw - 5/16" Rod
FRS-15-2	15"	Standard Flat Root Saw - 3/8" Rod
FRS-18-1	18"	Standard Flat Root Saw - 5/16" Rod
FRS-18-2	18"	Standard Flat Root Saw - 3/8" Rod
FRS-20-1	20"	Standard Flat Root Saw - 5/16" Rod
FRS-20-2	20"	Standard Flat Root Saw - 3/8" Rod



Part Numbers:



HCRS-3-1	3"	Heavy-Duty Concave Root Saw - 5/16" Rod
HCRS-3-2	3"	Heavy-Duty Concave Root Saw - 3/8" Rod
HCRS-4-1	4"	Heavy-Duty Concave Root Saw - 5/16" Rod
HCRS-4-2	4"	Heavy-Duty Concave Root Saw - 3/8" Rod
HCRS-5-1	5"	Heavy-Duty Concave Root Saw - 5/16" Rod
HCRS-5-2	5"	Heavy-Duty Concave Root Saw - 3/8" Rod
HCRS-6-1	6"	Heavy-Duty Concave Root Saw - 5/16" Rod
HCRS-6-2	6"	Heavy-Duty Concave Root Saw - 3/8" Rod
HCRS-8-1	8"	Heavy-Duty Concave Root Saw - 5/16" Rod
HCRS-8-2	8"	Heavy-Duty Concave Root Saw - 3/8" Rod

HCRS-10-1	10"	Concave Root Saw - 5/16" Rod
HCRS-10-2	10"	Concave Root Saw - 3/8" Rod
HCRS-12-1	12"	Concave Root Saw - 5/16" Rod
HCRS-12-2	12"	Concave Root Saw - 3/8" Rod
HCRS-15-1	15"	Concave Root Saw - 5/16" Rod
HCRS-15-2	15"	Concave Root Saw - 3/8" Rod
HCRS-18-1	18"	Concave Root Saw - 5/16" Rod
HCRS-18-2	18"	Concave Root Saw - 3/8" Rod
HCRS-20-1	20"	Concave Root Saw - 5/16" Rod
HCRS-20-2	20"	Concave Root Saw - 3/8" Rod

Part Numbers:



HFRS-3-1	3"	Heavy-Duty Flat Root Saw - 5/16" Rod
HFRS-3-2	3"	Heavy-Duty Flat Root Saw - 3/8" Rod
HFRS-4-1	4"	Heavy-Duty Flat Root Saw - 5/16" Rod
HFRS-4-2	4"	Heavy-Duty Flat Root Saw - 3/8" Rod
HFRS-5-1	5"	Heavy-Duty Flat Root Saw - 5/16" Rod
HFRS-5-2	5"	Heavy-Duty Flat Root Saw - 3/8" Rod
HFRS-6-1	6"	Heavy-Duty Flat Root Saw - 5/16" Rod
HFRS-6-2	6"	Heavy-Duty Flat Root Saw - 3/8" Rod
HFRS-8-1	8"	Heavy-Duty Flat Root Saw - 5/16" Rod
HFRS-8-2	8"	Heavy-Duty Flat Root Saw - 3/8" Rod

HFRS-10-1	10"	Heavy-Duty Flat Root Saw - 5/16" Rod
HFRS-10-2	10"	Heavy-Duty Flat Root Saw - 3/8" Rod
HFRS-12-1	12"	Heavy-Duty Flat Root Saw - 5/16" Rod
HFRS-12-2	12"	Heavy-Duty Flat Root Saw - 3/8" Rod
HFRS-15-1	15"	Heavy-Duty Flat Root Saw - 5/16" Rod
HFRS-15-2	15"	Heavy-Duty Flat Root Saw - 3/8" Rod
HFRS-18-1	18"	Heavy-Duty Flat Root Saw - 5/16" Rod
HFRS-18-2	18"	Heavy-Duty Flat Root Saw - 3/8" Rod
HFRS-20-1	20"	Heavy-Duty Flat Root Saw - 5/16" Rod
HFRS-20-2	20"	Heavy-Duty Flat Root Saw - 3/8" Rod



Root Saw - Blades



Part Numbers:

CRS-3B	3"	Concave Root Saw - Blade Only
CRS-4B	4"	Concave Root Saw - Blade Only
CRS-5B	5"	Concave Root Saw - Blade Only
CRS-6B	6"	Concave Root Saw - Blade Only
CRS-8B	8"	Concave Root Saw - Blade Only

CRS-10B	10"	Concave Root Saw - Blade Only
CRS-12B	12"	Concave Root Saw - Blade Only
CRS-15B	15"	Concave Root Saw - Blade Only
CRS-18B	18"	Concave Root Saw - Blade Only
CRS-20B	20"	Concave Root Saw - Blade Only



Part Numbers:

FRS-3B	3"	Standard Flat Root Saw - Blade Only
FRS-4B	4"	Standard Flat Root Saw - Blade Only
FRS-5B	6"	Standard Flat Root Saw - Blade Only
FRS-6B	8"	Standard Flat Root Saw - Blade Only
FRS-8B	10"	Standard Flat Root Saw - Blade Only

FRS-10B	12"	Standard Flat Root Saw - Blade Only
FRS-12B	15"	Standard Flat Root Saw - Blade Only
FRS-15B	18"	Standard Flat Root Saw - Blade Only
FRS-18B	20"	Standard Flat Root Saw - Blade Only



Part Numbers:

HCRS-3B	3"	Heavy-Duty Concave Root Saw - Blade Only
HCRS-4B	4"	Heavy-Duty Concave Root Saw - Blade Only
HCRS-5B	5"	Heavy-Duty Concave Root Saw - Blade Only
HCRS-6B	6"	Heavy-Duty Concave Root Saw - Blade Only
HCRS-8B	8"	Heavy-Duty Concave Root Saw - Blade Only

HCRS-10B	10"	Heavy-Duty Concave Root Saw
HCRS-12B	12"	Heavy-Duty Concave Root Saw
HCRS-15B	15"	Heavy-Duty Concave Root Saw
HCRS-18B	18"	Heavy-Duty Concave Root Saw
HCRS-20B	20"	Heavy-Duty Concave Root Saw

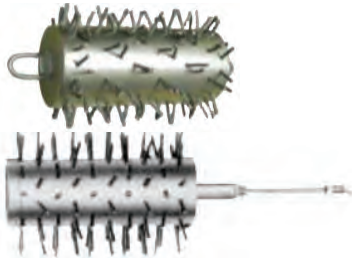


Part Numbers:

HFRS-3B	3"	Heavy-Duty Flat Root Saw - Blade Only
HFRS-4B	4"	Heavy-Duty Flat Root Saw - Blade Only
HFRS-5B	5"	Heavy-Duty Flat Root Saw - Blade Only
HFRS-6B	6"	Heavy-Duty Flat Root Saw - Blade Only
HFRS-8B	8"	Heavy-Duty Flat Root Saw - Blade Only

HFRS-10B	10"	Flat Root Saw - Blade Only
HFRS-12B	12"	Flat Root Saw - Blade Only
HFRS-15B	15"	Flat Root Saw - Blade Only
HFRS-18B	18"	Flat Root Saw - Blade Only
HFRS-20B	20"	Flat Root Saw - Blade Only

Porcupines



Part Numbers:

D-4-1	4"	Turn Type for 5/16" Rod
D-4-2	4"	Turn Type for 3/8" Rod
D-6-1	6"	Turn Type for 5/16" Rod
D-6-2	6"	Turn Type for 3/8" Rod
D-8-1	8"	Turn Type for 5/16" Rod
D-8-2	8"	Turn Type for 3/8" Rod
D-10-1	10"	Turn Type for 5/16" Rod

D-10-2	10"	Turn Type for 3/8" Rod
D-12-1	12"	Turn Type for 5/16" Rod
D-12-2	12"	Turn Type for 3/8" Rod
D-15-1	15"	Turn Type for 5/16" Rod
D-15-2	15"	Turn Type for 3/8" Rod
D-18-1	18"	Turn Type for 5/16" Rod
D-18-2	18"	Turn Type for 3/8" Rod

Steel Sewer Brush



Part Numbers:

C-4-1	4"	For 5/16" Rod
C-4-2	4"	For 5/16" Rod
C-6-1	5"	For 5/16" Rod
C-6-2	6"	For 5/16" Rod
C-8-1	8"	For 5/16" Rod

C-8-2	8"	For 5/16" Rod
C-10-1	10"	For 5/16" Rod
C-10-2	10"	For 5/16" Rod
C-12-1	12"	For 5/16" Rod
C-12-2	12"	For 5/16" Rod

3-Blade Cutters Chucks



Part Numbers:

CH-1-1	5/16"	Chuck with Adapter Rod
CH-1-2	3/8"	Chuck with Adapter Rod
CH-1-3	0.375"	Chuck with Set Screw Connection
CH-1-4	0.393"	Chuck with Set Screw Connection
CH-1-5	0.415"	Chuck with Set Screw Connection
CH-1-6	0.461"	Chuck with Set Screw Connection

Rod Reel



Made from 1/2" round bar; can be used with steel tripod stand or trailer type

Puma Double-Sided Curved Blades



Part Numbers:

CB-4	4"
CB-6	6"
CB-8	8"
CB-10	20"
CB-12	12"
CB-15	15"

Flat Blades



Part Numbers:

FB-4	4"
FB-6	6"
FB-8	8"
FB-10	20"
FB-12	12"
FB-15	15"

Power Rod and Rodder Accessories

Manhole Jack Support



Part Numbers:

RR-1-7
RR-1-8

Foot Jack Support



Part Numbers:

RR-1-5
RR-1-6

Lower Rigid Rod



Part Numbers:

RR-1-4

Carry All Trailer



Part Numbers:

H-10-1

Power Rod Drive Trailer



Part Numbers:

SPD-3	3 HP Powerdrive
SPD-6.5	6 HP Powerdrive
SPD-8	8 HP Powerdrive

Rod Guide Hoses and Accessories

Lightweight Hose Guide



Part Numbers:

LW-7	7'	LW-20	20'
LW-10	10'	LW-22	22'
LW-15	15'	LW-24	24'
LW-18	18'	LW-25	25'

Heavy-Duty Hose Guide



Part Numbers:

HD-7	7'	HD-20	20'
HD-10	10'	HD-22	22'
HD-15	15'	HD-24	24'
HD-18	18'	HD-25	25'



Part Numbers:

HDS-7	7'	Heavy Duty Hose Guide with Heavy Duty Steel Spring Liner
HDS-10	10'	Heavy Duty Hose Guide with Heavy Duty Steel Spring Liner
HDS-15	15'	Heavy Duty Hose Guide with Heavy Duty Steel Spring Liner
HDS-18	18'	Heavy Duty Hose Guide with Heavy Duty Steel Spring Liner
HDS-20	20'	Heavy Duty Hose Guide with Heavy Duty Steel Spring Liner

Special HD Cam-Lock Ends



Any hose listed above can be ordered and paired with a steel end. Our steel ends are designed to last through several tasks. They are both durable and are ready to install. Steel ends are available in male and female options.

Rod Bending Kits



The Rod Bending Kit allows you to put the correct bend on the end of your Continuous Rod. This kit allows you to fit the correct hook in any of your adapter couplings.



Hose Guide Bell



Part Numbers:
 RR-1-7
 RR-1-8

Steel Male End for Bell



Part Numbers:
 RR-1-5
 RR-1-6

Bell Steel Female End



Part Numbers:
 RR-1-4

Female Straight Coupler



Part Numbers:
 RR-1-7
 RR-1-8

Set of Hose Clamps



Part Numbers:
 RR-1-5
 RR-1-6

Insert Guide



Part Numbers:
 RR-1-4

Guide Hose Aluminum Male End



Part Numbers:
 RR-1-7
 RR-1-8

Continuous Rod Transfer Rack



Part Numbers:
 RR-1-5
 RR-1-6

Continuous Rod



Part Numbers:
 RR-1-4

Lightweight/Heavy-Duty Hose - Flex-Metallic Liner



SCL-7



SCL-8

SEWER NOZZLES

SEWER NOZZLES



Here at Haaker, we take pride in offering the highest quality equipment to support industrial pipe and storm cleaning. For these professionals, few tools are as important as sewer nozzles. These nozzles come in a variety of types designed to tackle your toughest projects with powerful precision. Like Haaker, KEG is committed to providing quality products to customers and supporting technology improvements through continuous education. Every product is backed by KEG's quality promise, offering a wide range of sewer nozzles to perform in even the most difficult of cleaning conditions.

Chain Cutter Family

Stabilized by stainless steel guide carriage skids, the cutters feature a unique spinner nozzle design that rotates the main shaft, spinning the attached chains at 2,500 RPM. Chains can be configured for grease or scale removal and root removal.



Micro Cutter
(2" - 6")



Mini Cutter
(4" - 10")



SP 150 Cutter
(6" - 24")



SCP 200 Cutter
(8" - 48")



SN 4000 Cutter
(6" - 48")

Call us today or visit us online for more information on our nozzles.

Micro Chain Cutter



Features:

- Easily configured
- Use in sweeping 90 degree or 45 degree elbows
- Pipe range: 2", 3", 4", 6"
- No skid required for 2" and 3" applications

Mini Chain Cutter



Features:

- Easily configured
- Use with 1/2", 3/4" and 1" hose applications
- 4", 6", 8", and 10" (optional) pipes available
- Pump minimum of 18 GPM and 1700 PSI required

Super Cutter Plus 150



Features:

- Stainless steel construction
- Water-driven design
- Roller chain is forgiving on pipe walls
- Skids and distance plates included for pipes 6-16"

Super Cutter Plus 200



Features:

- Stainless steel construction
- Water-driven design
- Skids and distance plates included for pipes 8-20"
- Pump flow of minimum of 50 GPM and 1200 PSI

Supernova 4000



Features:

- Easily configured for multiple jobs
- High speed, high torque water-driven design
- Skids and distance plates included for pipes 6-16"
- Roller chain is forgiving on pipe walls
- Operates in egg-shape pipes
- Pump flow of minimum of 50 GPM and 1700 PSI

Specialty Nozzle Family

We offer the perfect solution for all your pipe cleaning application needs! These nozzles are built to last and are designed to tackle a variety of materials.

Aqua Power 700 Nozzle



Features:

- Multiple applications with one nozzle
- Individual jets
- Rear jets can be plugged for manhole cleaning
- Bolt-on skids included

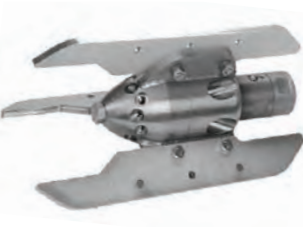
R2D2-1 Nozzle



Features:

- Controlled-speed directional cleaning utilizing centrifugal clutches
- Replaceable threaded titanium ceramic inserts

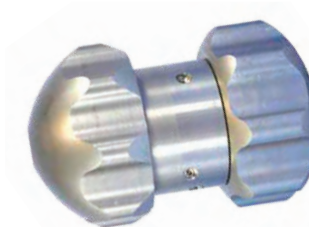
Equalizer Nozzle



Features:

- Replaceable titanium ceramic inserts
- Bolt-on skids (included increase nozzle body diameter to 8"

DUCE Nozzle



Features:

- No maintenance or lubrication required
- Pressure range: 1300 PSI to 2000 PSI
- Hose sizes: 0.375" - 1.25"
- Flow range: 5 GPM - 125 GPM

Revolution by Reaper Rotating Sewer Nozzle



Features:

- All-In-One ability
- Removes 25% more debris than competition
- High climb ability
- Magnetic clutch for low maintenance
- Flow range 40-80 GPM

Commander Rotator Nozzle



Features:

- Jets with the flow from uphill downward
- 4 rotating jets, 4 forward facing, & 4 propulsion jets
- Pressure range: 1500-3000 PSI
- Flow range 50-120 GPM

Floor Cleaner Family



Features:

- 14 Jet, 12 Jet, 10 Jet, 8 Jet, and 6 Jet models available
- Fillable weight port
- High efficiency cleaning and reduced operating costs
- Superior water pattern design
- Heavy or compacted solids

"The Twins" Family



Features:

- Complete package including fittings
- Large diameter lines
- Can utilize any KEG floor cleaner
- Parallel in a large diameter pipe

Aluminum Nozzles

KEG's Aluminum Nozzles are lighter to handle and have the same great advantages and applications as the nozzles made of stainless steel. The aluminum nozzles are available in Traction, Cleaning, Torpedo, and Royal models only.



Traction
Nozzle



Cleaning
Nozzle



Torpedo
Nozzle



Royal
Nozzle

KEG sewer nozzles provide outstanding efficiency for larger storm and sanitary lines. These heavy-duty cleaning nozzles are engineered for quality cleaning every time.

Cleaning Nozzle Family

Our Cleaning Nozzle Family includes a variety of products that are designed to aide you in routine pipe cleaning and maintenance applications.

Tier One: Lower Efficiency, Shorter Life Span

Standard Nozzle



Features:

- Factory-drilled orifices
- Optional forward jet
- Water resistant
- Cost competitive

Ball Nozzle



Features:

- Optional forward jet
- Water resistant
- Cost competitive tier one nozzle
- Rounded edges

Forward Jet Nozzle



Features:

- Moves debris away from area
- Cost effective
- No back-flow into house or structure
- Wear resistant

Tier Two: Better Efficiency, Longer Life Span

Standard Egg Nozzle



Features:

- Tier Two nozzle
- Replaceable inserts prolong nozzle life
- Made of 300 series hardened stainless steel

Egg Devastator Nozzle



Features:

- Cost competitive Tier Two nozzle
- 30-degree jet angles available
- With replaceable inserts to prolong nozzle life

Sewer Flush Nozzle



Features:

- Nozzle designed for dragging
- Cost competitive Tier Two nozzle
- High wall force for better cleaning

Tier Three: Most Efficient and Most Powerful Fluid Mechanics, Longest Life Span

Traction Nozzle



Features:

- With replaceable inserts to prolong nozzle life
- Penetrator and cleaning nozzle
- Optional forward penetrating style

Royal Nozzle



Features:

- One of the nozzles in the Cleaning Family
- High wall force
- Save time, money, and energy

Torpedo Nozzle



Features:

- Suitable for 6" to 16" pipes
- With replaceable inserts to prolong nozzle life
- Save energy

Sewer Nozzle



Features:

- Heavy dragging nozzle
- High wall force cleaning
- Replaceable threaded inserts
- General sewer cleaning
- Tier Three nozzle, 80% efficiency

Cleaning Nozzle



Features:

- Durable nozzle for everyday general cleaning
- Available in 1/2" size cleaning nozzle
- High wall force cleaning
- Wide angles reduce air draw
- Tier Three nozzle, 80% efficiency



Penetrating Nozzle Family

We understand the need for efficiency when it comes to tough clogs and obstructions in a sewer line. We offer high performance penetrating nozzles for any task at hand.

Tier One and Tier Two Efficiency:



Triple Edge Quattro Nozzle

Drill Point Quattro Nozzle

Rambo Nozzle

Tier Three Efficiency:



Stallion Nozzle



O.M.G. Nozzle

Triple Edge Quattro Nozzle



Features:

- Forward jets
- Available with steel or titanium ceramic inserts
- Forward jets
- Sharp edges
- Good thrust

Drill Point Quattro Nozzle



Features:

- Excellent traction
- Affordable
- Designed for grease piercing
- Drill point
- Better thrust

Rambo Nozzle



Features:

- Engineered to function as three nozzles in one
- Forward jets
- Drill points
- Total blockages
- Excellent thrust

Stallion Nozzle



Features:

- High thrust with 12" jets
- Long design spans holes
- Minimal force on the pipe wall
- Replaceable inserts
- Heavy debris removal
- Gentle on pipe walls

O.M.G. Nozzle



Features:

- Tier 3 efficiency
- Clears path for other nozzles
- Gentle on pipe walls
- Heavy debris removal
- Replaceable inserts

Finishing Nozzle Family

KEG's Finishing Nozzles are designed with a free-spinning rotor to remove those grease deposits along with tender roots and other vegetation to ensure perfectly cleaned pipes and a finished job.

Features:

- Designed with 360-degree maintenance tool to provide the finishing touch
- High rotational speed
- Reversible rotating barrel



1" Rotor Nozzle



1/2" Rotor Nozzle



1/4" Rotor Nozzle

Marksman™ Long Distance Cleaning Nozzle

The Marksman is designed to provide precision in distance and industrial cleaning performance. It is engineered for any hard to reach cleaning applications while keeping the operator safe.



Features:

- Long distance cleaning nozzle
- Engineered for hard to reach cleaning areas
- Accuracy and precision
- Superior design
- Operator safety
- Reduced water consumption

Ejector Nozzle Family

Ejector nozzles are suitable for cleaning water-bearing pipes only. The special arrangement of the nozzle inserts results in the "soft" cleaning effect; making these nozzles for cleaning older sewer networks and culvert cleaning.

Ejector Nozzle (Small / Large)



Features:

- For sewer pipes from 10" to 16"
- HP connection 1" inner thread
- Six nozzle inserts
- Small: weight of 22.2 lbs.
- Large: weight of 46.25 lbs.

Deep Sucker Ejector



Features:

- Connection with high-pressure jetters
- For sludge suction and discharge
- More than 26' to aid the vacuum pump
- HP connection with 1" union nut
- High-pressure pump

Nozzle Kits, Packages, & Parts

KEG offers many kit combinations and arrangements and is intended to give our customers the best solutions for specific job requirements. From swivels to inserts, we stand ready to provide you with the parts and tools you need.

1" & 3/4" Kits



Features:

- Combinations from starter kits, basic kits, sanitary kits, complete kits, and storm kits
- Includes a variety of nozzles
- Designed to be compact, mobile, and durable

1/2" & 3/4" Kits



Features:

- Includes a variety of nozzles
- Designed to be compact and mobile
- Combinations from starter kits, basic kits, sanitary kits, complete kits, and storm kits

High Pressure Swivels



Features:

- Engineered to endure
- Available in a variety of sizes
- Contact us today for our full list of sizes

Replaceable Inserts



Available:

- M8 inserts
- M14 inserts
- M6 inserts

Hydro Excavation Nozzle Family

Hydro Excavation is often a more precise and safer way of digging than with traditional mechanical means. Our collection of hydro Excavation nozzles are all suited for 1/2" hose connections, with the New Style Twister Nozzle offering multiple connection sites.

Hydro Excavation Nozzle



Features:

- Flow ranges from 4 GPM - 25 GPM
- Excellent for hydro excavating
- Designed for digging
- Stainless steel body
- Zero rear jets and four replaceable front jets
- Strictly for hydro excavating

Hand Injector Nozzle



Features:

- Excellent for hydro excavating
- Manual cleaning
- Lightweight and built to last
- Flow ranges from 4 GPM - 25 GPM
- Stainless steel body
- Zero rear jets and four replaceable front jets
- Not used for cleaning lines

Twister Nozzle - Old Style



Features:

- Oscillating forward jets
- Designed for digging and cleaning lines
- Excellent for hydro excavating
- Four rear jets can be plugged or opened
- Stainless steel body
- Available in 1/2" size

Twister Nozzle - New Style



Features:

- Oscillating forward jets
- Excellent for hydro excavating
- Designed for digging and cleaning lines
- Four rear jets can be plugged or opened
- Stainless steel body
- Available in multiple sizes

When your business begins building a repertoire of sewer cleaning tools, one of the things you can't do without are sewer nozzles. Every cleaning situation will require a different set of tools, so if you plan to offer the best service to your customers you'll need a variety of equipment to do so.





Scan For More Info



TRUVAC Hydro Excavators

Our hydro excavation trucks come equipped with water heaters and produce high-pressure low volume streams to quickly and safely dig. Hydro Excavation equipment is safe for operators and friendly for the environment. Unlike traditional excavation tools that have been used in the past, hydro excavators are great for removing dirt and debris without causing excessive damage to the surroundings. Check out the fleet of TRUVAC trucks below to learn more.



TRUVAC HXX

The TRUVAC HXX Hydro Excavator is a powerful machine that tackles major excavations while still providing safe, non-destruction digging. For over 50 years Vactor has been supplying contractors and municipalities with products with air conveyance and high-pressure water vacuum technology that is built to last.

TRUVAC Paradigm

The most innovative and versatile sub-compact vacuum excavator on the market, the Paradigm lets you excavate around utilities with the utmost safety and efficiency. Paradigm is customer inspired and built to satisfy the most stringent safe digging requirements.

TRUVAC Prodigy

The perfect safe-digging machine for a wide range of demanding applications, our TRUVAC hydro excavators deliver prime results every time. The Prodigy delivers incredible versatility and power. Lower your operating cost while increasing your efficiency.

Hydro Excavation Nozzle Family

Hydro Excavation Nozzle



Features:

- Flow ranges from 4 GPM - 25 GPM
- Excellent for hydro excavating
- Designed for digging
- Stainless steel body
- Zero rear jets and four replaceable front jets
- Strictly for hydro excavating

Twister Nozzle - Old Style



Features:

- Oscillating forward jets
- Designed for digging and cleaning lines
- Excellent for hydro excavating
- Four rear jets can be plugged or opened
- Stainless steel body
- Available in 1/2" size

Hand Injector Nozzle



Features:

- Excellent for hydro excavating
- Manual cleaning
- Lightweight and built to last
- Flow ranges from 4 GPM - 25 GPM
- Stainless steel body
- Zero rear jets and four replaceable front jets
- Not used for cleaning lines

Twister Nozzle - New Style



Features:

- Oscillating forward jets
- Excellent for hydro excavating
- Designed for digging and cleaning lines
- Four rear jets can be plugged or opened
- Stainless steel body
- Available in multiple sizes

DigPig Hydro Excavation Nozzles

Silencer Nozzle



Features:

- 4200 PSI
- 10° spray radius
- 80% stronger carbides
- Stainless steel inlet and body
- 205° F/96° C heat rating
- Less vibration and noise

Titan Hydrovac Lance



Features:

- 3 foot to 7 foot lengths
- Made with stainless steel, schedule 80 aluminum, and type 3 anodizing to strengthen alloys
- Corrosion free
- 90% stronger than other lances on the market

Hydra-Flex Nozzle Family

Ripsaw Rotating Turbo Nozzle



Features:

- 3200 PSI
- High-performance rating
- Non-conductive
- Heavy-duty
- High-impact
- 0° straight water stream
- 18° cone coverage

Machete Linear Oscillating Nozzle



Features:

- Rugged design
- Replaceable
- Durable
- Non-conductive
- Heavy-duty
- High-impact
- Color-coded

Hand Injector Nozzle



Features:

- Superior performance
- Allows you to cut deeper
- Prepared to tackle your toughest jobs
- Reduces undermining for safer operating use
- Withstands harsh environments
- 15° wedge of powerful flow
- Faster digging ability

Hydro Excavating Tools & Accessories

Having the right hydro Excavation equipment is crucial to reaching delicate and fragile under-ground structures. Our hydro Excavation trucks come equipped with water heaters and produce high-pressure low volume streams to quickly and safely dig. When you incorporate high-pressure, low volume streams achieve maximum efficiency by clearing dirt and debris while using the least amount of water. Hydro Excavation equipment is safe for operators and friendly for the environment. We know that tools and accessories are just as important as the trucks we offer. That is why we provide our customers with the best in hydro excavating tools from trusted brands.

Vactor / Van-Con "Dig-It" Tool



Part Numbers:

HY-EX-8V4-3/4	8"	3/4" Hose Size
HY-EX-8V8-3/4	8"	3/4" Hose Size
HY-EX-8V10-3/4	8"	3/4" Hose Size
HY-EX-8V4-1	8"	1" Hose Size
HY-EX-8V8-1	8"	1" Hose Size
HY-EX-8V10-1	8"	1" Hose Size

Camel "Dig-It" Tool



Part Numbers:

HY-EX-8C4-3/4	8"	3/4" Hose Size
HY-EX-8C8-3/4	8"	3/4" Hose Size
HY-EX-8C10-3/4	8"	3/4" Hose Size
HY-EX-8C4-1	8"	1" Hose Size
HY-EX-8C8-1	8"	1" Hose Size
HY-EX-8C10-1	8"	1" Hose Size

Vac-All "Dig-It" Tool



Part Numbers:

HY-EX-8J4-3/4	8"	3/4" Hose Size
HY-EX-8J8-3/4	8"	3/4" Hose Size
HY-EX-8J10-3/4	8"	3/4" Hose Size
HY-EX-8J4-1	8"	1" Hose Size
HY-EX-8J8-1	8"	1" Hose Size
HY-EX-8J10-1	8"	1" Hose Size

The hydro excavator "Dig-It" Tools connect to your suction tube by way of the top flange to fit your style of machine. Models come in 10 jet, 8 jet and 4 jet depending on your needs.

Hydro-Vac Tube Holders & Handles

Two Style Handle



Part Numbers:

HYH-4	4"	Hydro-Vac Tube Holder With 2 Handles For 4" Tube Or Hose
HYH-6	6"	Hydro-Vac Tube Holder With 2 Handles For 6" Tube Or Hose
HYH-8	8"	Hydro-Vac Tube Holder With 2 Handles For 8" Tube Or Hose

Yellow Tube and Adapter



Part Numbers:

1280122A	4" Yellow Hose
1280188C	6" Yellow Hose



Part Numbers:

6FFX6FH	6" Yellow Hose Adapter
8FFX8FH	8" Yellow Hose Adapter



Tube Hose Clamps

Tube Hose Clamps keep your hose steady at every connection. They are a great addition to your tool kit while being affordable and easy to use.*

Part Numbers:

THV-8	Tube Hose Clamp	Vactor / Vac-Con For 8"
THC-8	Tube Hose Clamp	Camel / Vac-All For 8"

Tube clamps provide security to your piping and hoses.

Our Southland Tube clamps feature a variety of important features that make them a vital product to use in your system.



*Image on the left displays the Tube Hose Clamps.

Image on the right shows the Tube Hose Clamps with a Hydro-Vac Tube Holder.





Scan For More Info



Ring-O-Matic Vacuum Excavators

We are excited to include Ring-O-Matic in the great line of hydro Excavation equipment we offer. These machines utilize the cutting power of high-pressure water and air along with a powerful vacuum for a wide variety of uses. Applications include potholing, sewer jetting, pit cleaning, environmental cleanup, construction site cleanup, and several other uses.



550 Jet Vac

The narrowest machine in its class the 55VX Hydro Vacuum Cleaner is maneuverable while being easy to see around.

Features:

- Available in vacuum trailer, vacuum truck, and skid mount configurations
- Powered by CAT®
- Compact low profile
- Rugged construction
- Unique handle style
- Easy to clean



850VX

The 850VX Hydro Vacuum Cleaner offers standard reverse flow and an obstruction-free vacuum hose for quick and easy cleaning.

Features:

- 800-gallon capacity
- 42 horsepower
- Positive displacement lobe pump
- 4,000 PSI
- Rear curbside water supply reel
- Tandem axle trailer



275VX

A Hydro Vacuum Cleaner that features a compact and low profile. This Vacuum Excavator provides easy visibility for your driver while offering stability in rough locations.

Features:

- Compact low profile
- Rugged construction
- Unique handle style
- Available in vacuum trailer, vacuum truck, and skid mount configurations
- Powered by CAT®
- Easy to clean
- Balanced design with optimum tongue weight
- Unique single-handle door latch design for faster opening and closing
- Patented Cyclo-Jet Potholing Excavator available
- Reverse flow



FT150VX

Combine high productivity with a compact design and you get the FT150VX. The power and efficiency of a 600 CFM blower that fits easily into a standard pickup bed, flatbed, or trailer.

Features:

- 150 gallon spoils tank
- Fixed tank design
- Eliminates hydraulics
- Easy-opening "spider" door lock system
- Operator comfort
- 90-gallon capacity water tank
- Compact design
- Easy to store and transport
- Safe utility locating and/or daylighting
- Ideal for cleaning our storm drains, catch basins, and valve boxes
- Entry-level machine for contractors

Viper

The Viper delivers the cleanest, safest, fastest, easiest one man potholing solution.



Standard



Dielectric

Features:

- Standard and dielectric options available
- Safe exposure
- Operator safety
- Delivers unmatched performance every time
- Increased profitability
- Increases productivity
- Potholes a 4' deep hole in about a minute
- Engineered patented high quality rotating nozzle to shoot 3,500 PSI water into the earth

Here at Haaker, we support safe digging every time!

Contact 811 before you dig!

Dig smart. Dig safe.

Ring-O-Matic products are currently only available in our California and Nevada locations.



Air Spade Tools & Accessories

We are excited to offer Air Spade to our customers. Air excavation has become a preferred method for digging on many jobs ranging from utility work to advanced tree care. Excavating with the AirSpade offers several advantages over conventional tools such as picks, shovels, and backhoes.



AirVac Vacuum Excavator - Utility Kit

AirVac is a mobile alternative to large vacuum trucks. This Vacuum Excavator is the ideal combination to safely uncover buried electric, gas, and water lines.

Features:

- Heavy-duty
- All aluminum construction
- 82 gallon tank
- Removable vacuum
- 24" x 16" dump door
- 15" diameter pneumatic tires
- Retractable stabilizer bar
- Integral air-pressure gauge



Lightweight Air Hose

Designed with flexibility and performance in mind, this air hose reduces worker fatigue while increasing overall hose mobility. Available in 10' and 25'.

Features:

- Oil-resistant
- Double jacket design for maximum durability
- Reinforces with high-strength textile yarn
- Chicago-style couplers
- Visibility-safe yellow



AirSpade 2000

Features:

- Available in 25 cfm, 60 cfm, 105 cfm, 150 cfm, 225 cfm; all with 4' barrel lengths
- Uncover underground objects without harm using compressed air



AirSpade 2000 - Short Barrel

Features:

- 60 cfm nozzle, 2' barrel
- Highly focused soil excavation
- Short barrel simplifies close-in work
- Dead-man trigger for safety



AirSpade 2000 Extensions

Features:

- Coupler included
- Available in 2', 3', 4', and 5'
- Lightweight design
- Electrical protection
- Dual female threaded coupler



AirSpade 3000

Features:

- 330 cfm; 5' barrel
- Move maximum dirt in minimum time
- In-line style handle with soft rubber grip
- Adjustable dirt shield



Utility AirSpade 4000

Features:

- Available in 105 cfm, 150 cfm, and 225 cfm; all with 4' barrel design
- Non-sparking brass barrel
- Adjustable rubber spray shield



Utility AirSpade 4000 Extension

Features:

- Coupler included
- Available in 2', 3', 4', and 5'
- Heavy-duty
- Provide extended reach
- Non-conductive



Utility AirSpade 4000 Kit

This case includes AirSpade's most popular components and accessories

Includes:

- Utility AirSpade 4000 handle
- 4' insulated, fiberglass barrel with dirt shield
- 3' insulated extension
- 105 cfm non-sparking bronze supersonic nozzle
- Plastic locking storage case
- 45 degree non-sparking brass angled adapter
- 1" ID x 10' lightweight air hose with Chicago-style connectors



Scan For More Info



Harben Trailer Jetters

We are excited to offer Harben jetters to our customers. Hydro jet drain cleaning, also called high pressure drain jetting is the process of using a high pressure water jet nozzle on the end of a long hose, to blast clean sewer pipes.



E180 DTK 375 Trailer Jetter

The Harben E180 is suitable for cleaning drains and sewers from 1" to 18" in diameter. The E180 has the patented Harben 'P' type high pressure diaphragm pump.

Features:

- 4000 psi / 18 gpm
- 375 gallon capacity
- 180 degree hydraulic & pivoting hose reel
- 7 channel wireless remote control (optional)
- Emission compliant diesel engine
- Single axle trailer



ET180 DTK 750 Trailer Jetter

To maximize your working time, the Harben ET180 trailer jetter is the model for you. It shares all the great features of the E180 with a 750 gallon water capacity.

Features:

- 4000 psi / 18 gpm
- Harben "run dry" high pressure diaphragm pump
- 750 gallon capacity
- 180 degree hydraulic & pivoting hose reel
- Double axle trailer

Harben Enclosed Jettors



4018 DSK Enclosed Jetter

Features:

- 4000 PSI/18 GPM
- Pullout pivoting hose reel carries up to 500' of jetting hose
- 375 gallon water capacity
- UV protected polyethylene tanks
- Lowest operation and maintenance costs in the industry



4018 VPK Van Pack Jetter

Features:

- 4000 psi /18 gpm
- Easy installation
- Kubota low emission diesel engine
- Hydraulic hose reel with feed guide
- Cleans drains up to 18" diameter
- Anti-freeze recirculation system

Harben Truck Mounted Jettors



4025 "Hi-O" Truck Mounted Jetter

Features:

- Up to 4,000 psi and 25 gpm
- Powerful Stage 5 low emission diesel engine
- Hydraulic hose reel and guide
- Heavy duty steel frame
- Cleans and descales drains up to 24" diameter
- Anti-freeze recirculation system



1018 "Century" Truck Mounted Jetter

Features:

- Up to 10,000 psi and 40 gpm
- Powerful Stage 5 low emission diesel engine
- Heavy duty steel frame
- Cleans and descales drains up to 36" diameter
- Anti-freeze recirculation system

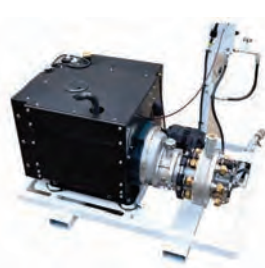
4018 "P Type" Truck Mounted Jetter



Features:

- 4000 psi / 18 gpm
- Harben "run dry" high pressure diaphragm pump
- 750 gallon capacity
- 180° hydraulic & pivoting hose reel
- Jump jet (optional)
- 7 channel wireless remote control (optional)
- Kubota or Hatz emission compliant diesel engine
- Single axle trailer

P Type (High Pressure Diaphragm Pump)



Features:

- Variable pressure and flow options up to 6000 PSI & 18 GPM
- Run dry without damage
- Filtration to 150 microns
- Pump sea water without modification
- Use with hot water up to 140°
- Multi-cylinders therefore no pulsation
- Compact and lightweight

The Harben pump offers flexibility for sewers ranging from 2"-18" diameter.



Scan For More Info



Cimline Asphalt Repair

Cimline's asphalt repair equipment offers unmatched ergonomic features, intuitive controls, and innovative solutions that ensure the quietest, safest, and most cost-effective operation on the market. Celebrated for pioneering tools that have revolutionized pavement preservation, Cimline boasts numerous industry firsts, such as the oil jacketed kettle, vertical material agitator, dual temperature control, electronic burner ignition and rubber torsion axles.



MA4 Longitudinal Joint Sealer

No CDL is required. The MA4 can be towed by a 1-ton work truck giving your company the ability to perform the job on your own schedule

Features:

- Works well with bulk material and material in solid block form
- Automated controls
- Set width and material application rate in seconds
- Indicator lights report speed is within range



M-Series Crack Sealer Machines

Contractors rave about the operator ease of use in the Cimline M-Series crack sealers, which range from 150 to 410-gallons capacities.

Features:

- Lowest load height in the industry
- optimizes operator safety
- Up to 40% lower noise
- Automatic controls
- Superior ergonomics with the M-Series Lightweight wand or Dripless wand



P5 One-Person Patcher

Features:

- Intuitive joystick controls
- Unique, 3-section boom and nozzle
- Pressurized 300-gallon emulsion tank
- Electric blanket heating
- Large safety lights
- Heated emulsion tank holds 10 tons of patch material



K-Series Emulsion Applicator

Features:

- 7-gauge steel tank & torsion axles
- Easier access with large maintenance hatch
- 250 and 500 gallon capacity
- Adjustable application with a folding spray bar and nozzle adjustment valves



ME-Series Mastic Melter Machine

Features:

- Best-in-class mixing agitator for complete mixing and suspension of materials
- Quick heat-up time
- Propane heated rear chute
- 6" Guillotine valve for controlled flow
- Digital temperature control monitors oil and material



P2 Two-Person Patcher

Features:

- Lower maintenance costs
- Onboard heat allows patching in cold weather
- 18-foot working radius boom
- Limits public disruption
- Vent-Flo™ nozzle that thoroughly coats the aggregate with emulsion
- Delivers aggregate up to 2.5" in diameter



R3 Asphalt Crack Router

Features:

- Quick Stop II anti-kickback system stops all backward travel if handles are released
- Dust suppression tank
- Cut-control option for consistent cut depth
- Large tilt-up shroud allows for bit access



P3 Truck-Mounted Patcher

Features:

- Universal design mounts
- Tight-turn radii and low clearance residential streets
- Onboard heat allows patching in cold weather
- 18-foot working radius boom
- Vent-Flo™ nozzle thoroughly coats the aggregate
- Delivers aggregate up to 2.5" in diameter

P4 Roll-Off Patcher

Features:

- Heated emulsion tank provides enough product to apply over 10 tons of patch material
- Onboard heat allows you to create a permanent patch in any weather
- Ergonomic, no-stress boom easily covers an 18-foot working radius
- Specially designed Vent-Flo™ nozzle that thoroughly coats the aggregate with emulsion, ensuring a permanent patch
- DuraPatcher venturi system delivers aggregate up to 2.5" in diameter



Scan For More Info



Stetco Clamshell Bucket Trucks

At Haaker Equipment Company, we're proud to offer Stetco's groundbreaking, environmentally-friendly solutions for managing municipal drainage operations, fully compliant with EPA stormwater requirements. Stetco's clamshell bucket trucks are innovatively designed to extract water while removing hefty debris to drastically cut down on unproductive dump trips. The adaptability of Stetco equipment enable digging in dry conditions, removing the necessity to produce slurry.



The Stetco Difference

Stetco Catch Basin Cleaners clean large volumes of heavy, abrasive and cumbersome debris from stormwater structures and other collection points – with zero liquid discharge. Stetco machines provide a complementary alternative to vac-trucks, at substantially lower cost of ownership.

Features:

- Load solids, not slurry
- Buckets squeeze out liquids and load only solid debris
- No need to carry and discharge water



Orange Peel



Rectangular Clamshell



Round Clamshell



950 Combination Unit

Features:

- Radial piston diaphragm pump jets laterals up to 18" with 1/2" hose
- Up to 4000 PSI at 12 GPM
- 300 gallon water tank
- 300 feet of jetting hose reel
- Equipped with high-pressure, low-volume water jetting system
- Depths down to 50 feet below grade



950T/15

Features:

- 15' hydraulic boom outreach
- Depths down to 100 feet below grade
- Stainless steel, watertight debris body 5-8 yd³ capacity
- Stabilizers for largest Stetco buckets
- Tested on over 140,000 fully loaded cleaning cycles



920 SP14

Features:

- 14' hydraulic boom outreach
- Depths down to 35 feet below grade
- Non-CDL 2-3 yd³ debris body
- Mounted on a Ford F-550 chassis for tight municipal confines
- Handles most bucket sizes



950T/13

Features:

- 13' hydraulic boom outreach
- Depths down to 100 feet below grade
- Stainless steel, watertight debris body 5-8 yd³ capacity
- Stabilizers for largest Stetco buckets
- Tested on over 140,000 fully loaded cleaning cycles

Stetco Clamshell Buckets



Orange Peel

Features:

- Sizes available: 13" and 15"
- Max blade opening up to 36"
- Volume capacity up to 1.3 ft³



Orange Peel - Long Blade

Features:

- Sizes available: 15", 18", & 24"
- Max blade opening up to 48"
- Volume capacity up to 3 ft³



Rectangular Clamshell

Features:

- Sizes available: 12" and 20"
- Max blade opening up to 35"
- Volume capacity up to 4 ft³



Rounded Clamshell

Features:

- Sizes available: 10" and 12"
- Max blade opening up to 34"
- Volume capacity up to 1 ft³



Scan For More Info



Switch-N-Go Multi-Use Work Trucks

For over two decades, Switch-N-Go® has been providing solutions to businesses that want a work truck that can do more. With nearly 30 different work truck bodies and ground level loading/unloading, Switch-N-Go® offers endless opportunities to maximize investment and optimize the work day. Match your fleet to your business with interchangeable truck bodies to service almost every industry with solutions in stainless steel, specialized equipment upfits, and more.



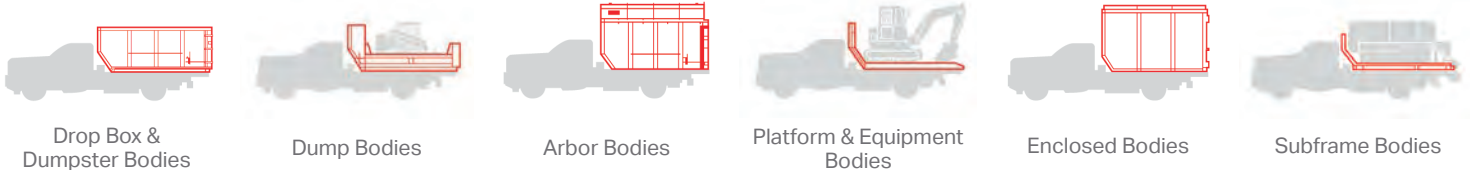
Multipurpose Made Easy

Switch-N-Go's customizable truck build is the ultimate multi-use truck. It's interchangeable designs enable peak productivity with only one piece of equipment. Switch your truck body easily to another layout and move materials, equipment, and waste with ease.

Features:

- Versatile, efficient, and adaptable
- Builds available in carbon steel, stainless steel, and aluminum
- Ground level loading and unloading
- 50° dump angle

Over 25 Interchangeable Work Truck Bodies



Drop Box & Dumpster Bodies

Dump Bodies

Arbor Bodies

Platform & Equipment Bodies

Enclosed Bodies

Subframe Bodies



Drop Box Body

Features:

- 18 yd³ hauling capacity
- Available in lengths ranging from 8-15'
- Barn door or single swing style tailgate
- Optional internal D-Rings for strapping down equipment
- Medium or heavy duty grade available
- Mini-rolloff container is designed to haul debris, materials or equipment



Arbor Body

Features:

- Sectional or one piece removable roof
- Single swing or barn doors
- Standard 6" steel ground rollers for smooth operation
- Optional internal D-Rings for strapping down equipment



Subframe Body

Features:

- Ideal for specialized equipment upfits
- Easily transport a liquid tank or applicator
- Lightweight design with sloped front
- Rail slides with no wheels
- 11' or 14' lengths



Dumpster Body

Features:

- 14-20 yd³ hauling capacity
- 50° dump angle
- Manufactured in 3 standard lengths (11', 12' and 14')
- 88" interior & 96" exterior body widths
- Interior side heights 51" or 53"
- Standard 6" steel ground rollers for smooth operation



Flatbed Body

Features:

- 112 ft² of flat space with a fold down ramp in platform bodies
- Ideal for hauling equipment & materials
- Manufactured in lengths from 9'-15'
- Optional beavertail features low profile 4" steel ground rollers
- Bulkhead window for greater visibility



Versa-Fit Bumper

Features:

- 20,000 lb trailer weight capacity
- Standard light package includes stop, turn, tail, reverse, and strobe
- OEM specific bolt on or welded design
- Interchangeable height adjustable ICC bars



Dump Body

Features:

- Carbon steel, stainless steel, or aluminum options
- 2-way tailgate features a ramp gate for drive-on convenience and a dump gate that makes dumping materials easier
- 12" side height & 24" tailgate height
- Drop down sides for curb access
- 50° dump angle



Storage Body

Features:

- Up to 702 ft³ of storage
- Lockable security style doors
- Available in seven standard lengths from 9'-15'
- 72" high sides plus 6" peak roof for walk-in space
- Standard 6" steel ground rollers



Hoist System

Features:

- Designed for class 4-7 chassis cab vehicles with a GVW of 13,500-33,000 lbs and a cab-to-axle of 60-138"
- Available in electric-over-hydraulic (E-Series) or full hydraulic (H-Series)
- Single handed controls (wired or wireless)



Scan For More Info



VIVAX Line Locators

Vivax has a range of products to accurately locate buried cables and pipes while inspecting the interior condition of metallic and non-metallic sewer pipes. We also offer a range of specialized products for locating faults on cathodic protected pipelines, telecom, and power cables. From the industry's first high-frequency radio line tracer to today's wide range of high performance, easy-to-use locating products, and video inspection cameras, we have acknowledged Vivax as a technology innovator.

vLoc3-Pro - Utility Locator

The vLoc3-Pro utility locator introduces new innovative tools for locating buried utilities, assuring damage, prevention while gathering information for analysis, and two sets of screened 3D color display.

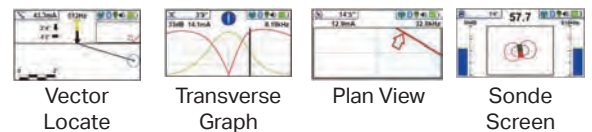


Features:

- Color-coded EM Distortion Warnings
- Cloud-based Data Warehousing
- Internal Data Logging
- Optional Bluetooth Connectivity
- More Frequencies Than vLoc3-Cam
- Alkaline & Li-ion batteries
- USB data point
- Ultra Bright LCD
- Tx-Link option
- IP65 & NEMA 4 rating, lightweight construction
- Full range MLA (marker locator adapter) option

Utility locators are used to locate underground utilities before you even start to dig. Its ability to detect and identify buried utilities prevents digging accidents while providing a safer excavation.

Perspective Screens:



*Classic View Shown To The Left

vLoc3-Cam - Sonde Locator

The vLoc3-Cam is the easiest to use a sonde locator on the market today. Designed with omni-directional antenna array and directional arrows, this locator is equipped to bring ongoing service even when direct connecting is not an option.



Sonde Mode

Locate Mode

Pushrod Trace Mode

Features:

- Digital Flags Dropped When Connecting To Your Phone
- Bluetooth Option For GPS Mapping
- Cloud-Based Data Warehousing
- Alkaline & Li-ion batteries
- USB data point
- Antenna Configuration
- Ultra Bright LCD
- IP65 & NEMA 4 rating, lightweight construction
- High impact ABS plastic
- No ghost signal

VCAMMX-2 - Mini Inspection System



Features:

- 5-watt 512hz, 640hz & 33khz Sonde
- Field-Serviceable Spring Assembly
- Internal Rechargeable Battery
- D18-MX Fixed Position Camera Or D26 Self-Leveling Camera

Popular Accessories

vLoc3-Pro Only:



Remote Antenna

Live Cable Connector

Live Plug Connector



Ground Extension Lead

Fault Locator

Rechargeable Battery Option

Induction Clamps

vLoc3-Pro & vLoc3-Cam:



Li-ion Rechargeable Battery

Vehicle Charging Lead



Sondes

Compatible Transmitters:

vLoc3-Pro & vLoc3-Cam:



5-Watt Transmitter:
Loc3-5Tx

10-Watt Transmitter:
Loc3-10Tx



1-Watt Transmitter:
VM-550FF

Features:

- SD mode for positive location in congested areas
- AC/DC external power source
- Alert line ID available with the vloc3-pro receiver

vLoc3-Pro Only:



25-Watt Transmitter:
Loc3-25Tx

vLoc3-Cam Only:



1-Watt Transmitter:
Loc-1Tx



Scan For More Info



Envirosight Pipe Inspection

As a leading brand in sewer cleaning equipment, we offer the Envirosight line of sewer cameras for effective inspection and assessment of sewers. Whether for maintenance or repair work, Envirosight has been in use with many businesses and utility services in many places. We are proud to offer such impressive and innovative products to our customers.

ROVVER X

The RovverX is a sewer camera on wheels that are equipped with a camera, lamp, and six-wheel drive. This camera can go further into the complex sewage system as far as 1,000 or 1,650 feet of multi-conductor cable can allow.



Quick Change "Tool-less" Design

Features:

- Standard wireless remote control system
- Selection of 12 wheel types
- Single-screw wheel attachment
- Complete capability
- Detachable automatic lift
- 6-wheel drive
- Proportional joystick to control speed and direction
- Steer and pan the camera at the same time
- Many ways to inspect
- Twin lasers to project measurements
- Full lasers for scanning

Quickview 360

Quickview 360 combines the maneuverability of a pole camera with data capture technology that produces AI 3D models from a 5-minute assessment.



Features:

- One handed operation pole camera
- 3D scanning of deteriorated enclosed spaces
- Wireless tablet operation, viewing and video storage
- HD video
- Easier and faster assessment

SAT II Lateral Launch

Discover the power of our lateral launch inspection crawler that can push past obstacles and maximize productivity. With speed and efficiency, this crawler is sure to bring you the results you need.



Features:

- Versatile
- Adaptable design
- Quickly reconfigure for sewer pipes
- Achieve speeds up to 98fpm
- Reduce downtime
- Steerable 8-wheel drive
- Precision-tuned push rod
- Time efficient
- Affordable
- Easy to maneuver
- Inspection intuitive

Verisight Pro Plus

The Verisight Pro Plus is a push camera inspection system that provides everything you need to inspect laterals and drain pipes while documenting data. It also allows you to generate reports and capture up to 90 hours of images and videos. This sewer inspection equipment allows you to quickly see everything you need to diagnosis drain problems.



Features:

- Crisp color footage
- High resolution PAL imager
- Self-leveling axial camera
- Interchangeable camera
- Adjustable illumination
- Adaptable to a number of specialty applications
- Available with 130', 200', and 330' reel options
- Rechargeable battery
- Ability to capture up to 90 hours of images and video

Jetscan 2.0

We are proud to offer JetScan 2.0 - the fastest, easiest way to see what you're jetting. Quickly capture HD footage of pipes easily and affordably.



Features:

- Network survey
- Safety from toxic discharges and gas line cross bores
- Cleaning validation
- Reducing costs
- Tool selection
- HD video nozzle
- Assess pipe conditions

Take Envirosight on the go!
Many of our products are designed to be portable for your convenience.

Want to learn more?
Call us today!

Portable



WinCan Wastewater Inspection Software

With WinCan, you can coordinate team members around high-efficiency workflows, leverage AI to find defects and plan rehab, and visualize complex data with an easy-to-use, map-based interface.

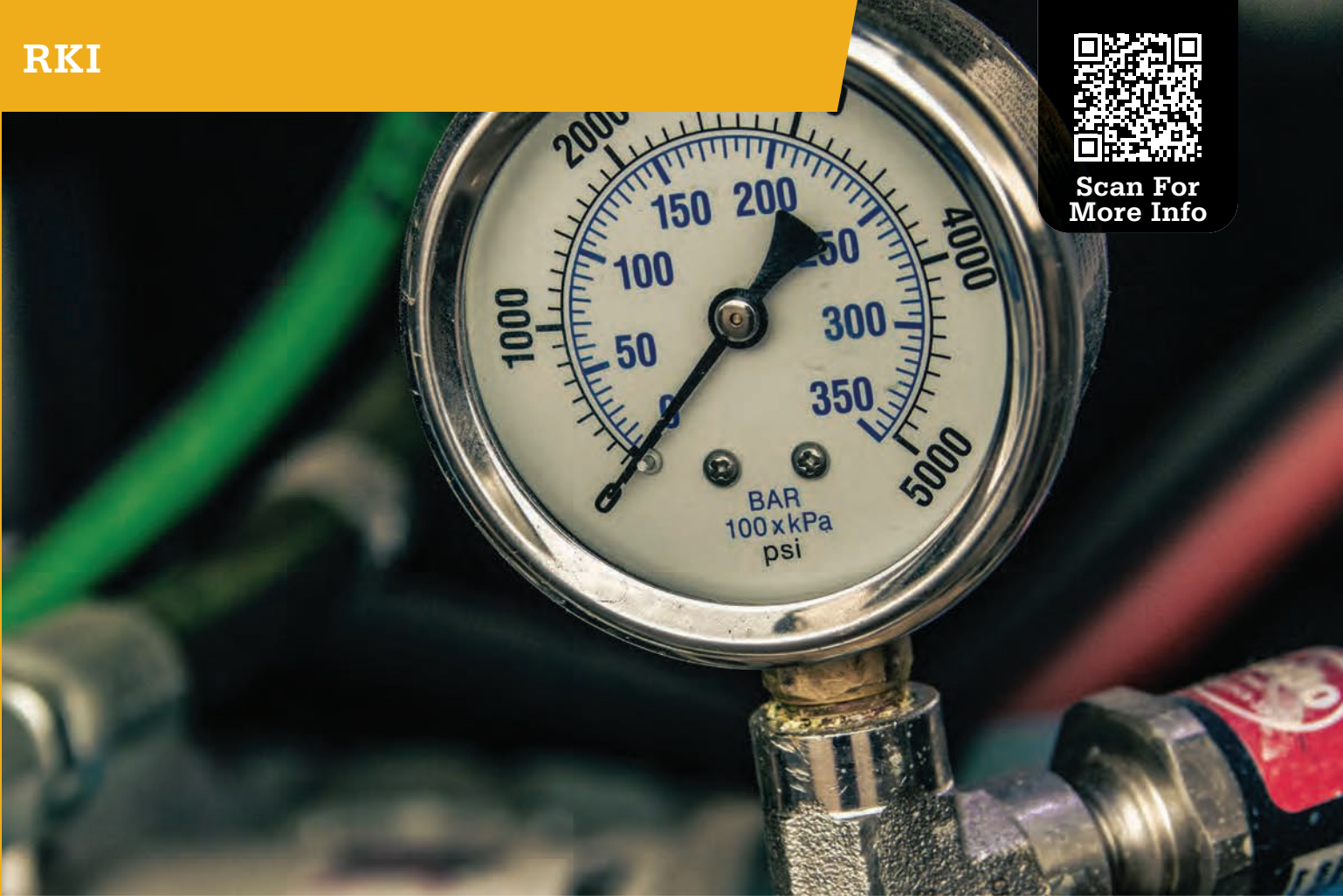


Features:

- AI-enhanced, cloud-enabled asset management software
- Manage your wastewater resources and assets in real time
- Find defects and plan rehab with AI
- Easy-to-use, map-based interface
- Consolidates all your asset data on a single platform
- Rehab planning module for automatic reports and budgets



Scan For More Info



RKI Gas Detection

For over 80 years, RKI Instruments has been at the forefront of sensor technology, developing advanced detection techniques to provide solutions for specific applications. Not only will our equipment protect your life and property from the hazards of gases and vapors, but with proper care, it may also be the last gas detector you will ever need to purchase.

GX-3R 4-Gas Confined Monitor

Smallest & lightest four gas monitor. 2.2" W x 2.55" H x 1.02" D, 3.52 ounces. Simultaneous detection of 4 gases. LEL, O₂, H₂S and CO. H₂ Compensated CO sensor available.

RKI Link Phone App

- Bluetooth communication with iOS and Android phones
- Direct readings from instrument
- Configure instrument settings
- Alarm notifications
- Instrument locator
- E-mail and text alarm notifications



GX-6000 PID Gas Monitor

Our lightweight, GX-6000 PID Gas Monitor is small but packs a punch. With interchangeable battery packs (Li-ion/alkaline), it operates up to 8-14 hours and fully recharges in three hours; making this gas monitor useful and efficient.



Features:

- Two smart sensor slots
- Equipped with a library of over 600 VOC gases
- Large, auto-rotating display
- Designed with LED light source, strong, internal sample pump, man-down alarm, and panic alarm
- Dust and water resistant
- IP67 rated
- Uses Li-ion battery
- Battery provides 14-hour life
- Pump is internal
- Gas ranges: LEL 0-100%, O2 0-40%, CO 0-500ppm, and H2S 0-100ppm
- Easy to use
- Includes 100-240 VAC charger
- Measures 2.6" x 7.8" x 2"
- Weight: 14 oz
- Features visual and audible alarms
- Intrinsic safety IECEx, ATEX, TIIS

GX-2012 Multi-Gas Detector

The GX-2012 is RKI's smallest personal 1-5 sensor gas monitor with a built-in sample pump. Having 3 operating modes, the GX-2012 can be used for confined space safety monitoring in its Normal Operating mode, and leak investigation for underground leak checking in Bar Hole mode.



Features:

- Dependable gas monitor detects LEL, O2, CO, and H2S levels
- Innovative pump pause extends the battery life
- Internal sample drawing pump features 50' range
- Designed with status indicator, 600 hr data logging capacity, barhole test mode, and calibration reminder setting
- Visual alarm LEDs on three sides help alert others in work area of any potential danger
- High-impact rubber overmolding
- Dust and water resistant
- Features visual and audible alarms
- Measures 5.6" x 2.8" x 1.16"
- Weight: 12.3 oz
- Optional external pump
- 2 year warranty

Eagle 2 Portable Gas Monitor

The Eagle 2 features a PID sensor for detecting high or low ppm levels, volume capability, and hydrocarbon detection at the push of a button. The Eagle 2 will continuously operate for over 18 hours, providing you with optimum performance and accurate results.



Features:

- Features 5 different sensor technologies
- PID sensors
- Alarming system designed for a 30 second response time
- TC sensors available for volume
- Data logging standard software
- Auto ranging with combustible gas
- Internal sample drawing pump
- Auto calibration
- Single gas calibration option available
- Change target gas with re-calibration
- Internal and external hydrophobic filters
- Intrinsically safe
- Features alkaline batteries
- Audible alarm silence is available to perform leak investigations without alarming nearby residents
- Features chemical resistant weatherproof enclosure

Wastewater Gas Monitoring

This unique tri-sensor head can be used either indoor or outdoors. Designed with a splash guard and flame arrestors for water and wastewater applications including wet wells, dry wells, bar screens, lift stations, digesters, thickeners, pump stations, and confined spaces.



Features:

- Equipped with 3 sensors
- Infrared sensors available
- Interfaces with Beacon 410 controller
- Available for LEL, O2, H2S, and CO
- Water repellent patented sensor coating
- Long life sensors

Calibration Kits

Diffusion Instrument Kits



Small Kit: Fixed flow regulators, two cylinder case, 34AL, 34L, tubing, GX-2009 Cal cup, and 1-1117RK Cal Cup



Large Kit: Fixed flow regulators, three cylinder case, two cylinder case, 58AL, 103L, tubing, GX-2009 Cal cup, and 81-1117RK Cal Cup

Sample Draw Instrument Kits



Small Kit: Demand flow regulators, two cylinder case, 34AL, 34L, and tubing.



Large Kit: Demand flow regulators, three cylinder case, two cylinder case, 58AL, 103L, and tubing.

Portable Solutions Multi-Gas Line



Eagle



Eagle 2



GX-3R



GX-3R Pro



GX-2012



GX-6000



Single Gas Personal Monitor - GasWatch 3

The GasWatch 3 is the world's smallest and lightest single-gas monitor. Weighing just 1.6 ounces, its compact form affords great comfort and flexibility in how you choose to wear it. It can be worn on your wrist like a watch or clipped into your breathing zone on your lapel, hard hat, or other safety equipment with its alligator clip. This personal monitor is designed to provide continuous protection from various harmful gases while monitoring oxygen deficiency. Contact us today to order a set for you and your team!



Features:

- Five versions to choose from CO, H₂S, or O₂
- CO Hydrogen-compensated and dual CO/O₂
- Three-year warranty with a two-year warranty for O₂ sensor
- Up to 4,000 hours of operation from one small, replaceable battery
- Sturdy IP-66/68 rated design
- Data logger, vibration
- Quick calibration
- Peak value display
- Temperature display





Scan For More Info



Sonetics Wireless Headsets

Avoiding loud noises isn't always possible. For people who work in construction, public works, manufacturing, transportation, and other vital industries, loud noises are simply a matter of day-to-day life. Protect hearing without disconnecting you from your surroundings with Sonetics wireless headsets and accessories.

APEX 3-Series DECT7 Wireless Headsets

Designed with team communication in mind and excellent range, these headsets are ideal to keep your team safe. With listen-through technology, you are in control of how much outside sound you let in for awareness and safety. This remarkable technology allows you to hear what is important while protecting yourself from NIHL.

APX377



Features:

- Includes DECT7 Wireless Technology
- Hands-free operation
- All-day comfort
- Extended battery life up to 24 hours

APX379



Features:

- Stereo listen-through
- Site-covering range
- Better protection
- Includes personal sound dosimeter

Personal Headsets With Advanced Hearing Protection

Sonetics next-generation direct-wire headsets pick up where foamies and earmuffs leave off. Protect your hearing while you get the job done. Experience all-day comfort and rugged performance in high noise environments. Models APX373 and APX379 include a talk related feature in their design.

APX372



APX373



APX379



Features:

- Hands-free operation
- All-day comfort
- Stereo listen-through

All headsets are available in a variety of color options.



DECT7 Portable Wireless ComHub



Features:

- Rugged bag design
- Share & share alike with 2-way radio connection
- Connect up to 15 Apex 3-Series wireless headsets
- Pair an APX379 wireless headset simultaneously with up to four SON150 wireless base stations
- Multi-channel system
- Two-way radio integration
- DECT digital encryption
- Connect up to 100 Apex 3-Series wireless headsets

User System Configurations

Up to 3 Users



Up to 5 Users



Up to 10 Users



Contents:

- APX377 or APX379 wireless DECT7 headsets; number of headsets in each pack based on number of users for each configuration is designed for (ie. 3, 5, 10)
- Battery-powered portable Com-Hub with DECT17 wireless base station
- Waterproof
- With 12V or 120/240V charging options

Portable Radio Cable Adapters

Connect your Apex 3-Series wireless headset or Portable Wireless ComHub to a portable two-way radio. Compatible with more than 400 radio models from manufacturers like Motorola, GE, Ericsson, Harris, ICOM, Kenwood, Maxon, Midland, Relm, Standard, Tait, Vertex, and many others.



Features:

- One-to-one or one-to-many
- Split push-to-talk
- Connect with no additional tools
- Easy to use
- Essential for team communication
- Transmit over either a ComHub connected portable radio and/or one direct-wired to the headset

Featured Accessories

Sonetics Headbands



Hard Hat Adapters



Li-ion Replaceable Batteries



Ear Seals



Hygiene Kits



Wall Chargers



System Charging Case

The key to success is good communication. That is what has made Haaker Equipment Company into what it is today and is the foundation of every successful project. When you are working on municipal projects, where communication is key, we offer you the solutions to communicate effectively, productively, and safely. Not only do we have individual solutions but we have a case for you to store it all.



Features:

- Simple and easy charging
- Includes single 120V wall adapter
- Rugged and robust design
- Watertight Pelican storm case
- Custom dividers for wireless headsets and ComHub
- Easy mobility
- Easy to store
- Ideal for teams of any size
- Telescoping pull handle
- Inset wheels
- Featured accessory for your team





Whelen Safety & Work Lights

Whelen products are proudly designed, manufactured, and tested on-site in America. Each product is built to meet even the toughest industry certifications. All Whelen products can be proven to deliver success every time. We are proud to offer Whelen products to ensure you and your team make it home safely at the end of the day.

Beacons

L31 & L32 Series



Features:

- Powder coated die-cast base
- Conformal coated electronics
- Die cast aluminum base
- Super LED beacon
- Flash multiple patterns alternately or simultaneously
- Cross link with up to 8 Whelen Super LED beacons

L50 Series



Features:

- Super LED beacon
- Twist-off polycarbonate dome
- Available in combination magnetic and suction mounts
- Polycarbonate base

Want to learn more?

Call us today or visit us online to view our full line of Whelen products.

Lightbars

Cenator™



Features:

- Lighthouse modules mount in any position
- Extruded aluminum platform
- Advanced thermal design to improve LED performance
- Optional red, blue, or amber internal filters
- Clear outer domes with optional color tops

Freedom® IV DYAD™ Series



Features:

- Linear super LED technology
- Extruded aluminum platform
- Center dividers with liquid injection molded seals
- One piece UNI-DOME construction
- Advanced thermal design to improve LED performance

Legacy® Series



Features:

- Extruded aluminum platform
- Advanced thermal design to improve LED performance
- Aluminum top repels hail and other environmental damages
- Center dividers with liquid injection molded seals
- Available in clear or smoked lenses

Liberty™ II Series



Features:

- Aluminum top repels hail and other environmental damages
- Center dividers with liquid injection molded seals
- Advanced thermal design to improve LED performance
- Extruded aluminum platform
- Available in clear or smoked lenses

Justice® Series



Features:

- Advanced thermal design to improve LED performance
- Extruded aluminum platform
- Easily upgraded or serviced in the field
- Available in clear or smoked lenses
- Brake, tail and turn options available

Towman's Series - Liberty II - Century - Freedom IV - Justice



Features:

- Newly designed Freedom IV platform available
- Designed exclusively for the rigorous standards of the Fire/EMS market
- Meets the Zone "A" upper requirements of all NFPA 1901 specifications
- Brake/tail/turn option available

Mini Lightbars

Responder® HD Series



Features:

- Universal permanent mount version easily retrofits most competitive model footprints
- Permanent bolt mount versions include 6" pigtail
- Magnet mount and magnetic/suction versions include 10" straight cord with cigar plug with LED on indicator

Responder® R1LP Series



Features:

- Super LED low profile conical CON3 mini lightbar
- Polycarbonate dome
- Available with extruded aluminum base or polycarbonate base
- Available in permanent, magnetic/suction mount models

Responder® R2LP Series



Features:

- Super LED low profile linear LIN6 mini lightbar
- Polycarbonate dome
- Available with extruded aluminum base or polycarbonate base
- Available in permanent, magnetic/suction mount models
- DUO technology model has different color LEDs

Mini Century™ Series



Features:

- Extruded aluminum base
- Standard current switching
- Scan-Lock flash patterns
- Pattern override
- Low profile

Mini Cenator™ Series



Features:

- SAE class 1 certified
- Four LIN6 lighthead
- Magnetic mount
- Permanent mount with 20' cable
- Advanced thermal design

Mini Justice® Series



Features:

- Super LED CON3 modules
- Linear super LED corners
- Permanent modules
- Low profile
- 2.25" high

Mini Freedom® IV Series



Features:

- Linear super LED technology
- Advanced thermal design
- Aluminum top repels several environmental damages
- Center dividers

Mini Liberty™ II Series



Features:

- Available in SOLO
- Advanced thermal design
- Aluminum top repels several environmental damages
- Extruded aluminum platform
- One piece UNI-DOME
- Scan-lock flash pattern switch

Mini Legacy® Series



Features:

- Aluminum top repels several environmental damages
- Advanced thermal design
- Center dividers
- Extruded aluminum platform
- One piece UNI-DOME
- Scan-lock flash pattern switch

Traffic Advisors

Traffic Advisor™ Rear Slot Mount



Features:

- Interior or exterior applications
- Extruded aluminum housing
- 15' cable standard, extra length cables available
- Fully encapsulated

Traffic Advisor™ Dominator Series - Dominator Plus



Features:

- Interior or exterior applications
- Extruded aluminum housing
- 15' cable standard, extra length cables available
- Fully encapsulated

Traffic Advisor™ Flat Mount



Features:

- TAM65, TAL65, TA4437M
- Interior or exterior applications
- Extruded aluminum housing
- Fully encapsulated

- 15' cable standard, extra length cables available
- Split arrow & warning function
- 5 year warranty

Traffic Advisor™ Front Load



Features:

- Interior or exterior applications
- Extruded aluminum housing
- Fully encapsulated
- 5 year warranty
- Split arrow & warning function
- SAE class 1

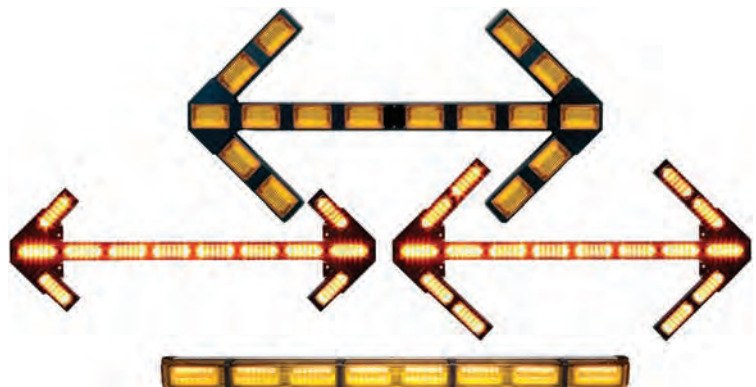
Traffic Advisor™ Dominator Series - Dominator Plus



Features:

- TAC8 includes control head
- Black extruded aluminum housing
- 15' cable standard, extra length available
- Rear drip switch provides 8 flash patterns

Traffic Advisor™ Flat Mount



Features:

- Extruded aluminum housing
- 15' cable standard, extra length available
- Left arrow, right arrow, split arrow, and warning functions
- Fully encapsulated
- 5 year warranty
- SAE class 1

Lightheads

ION™ Series*



Features:

- SOLO, DUO, & TRIO models available
- Single or split colors
- Available with smoked lenses

ION™ Mini T-Series*



Features:

- Available in 3-in-1 combination
- Single color models have combination with 180° and TIR directional warning
- Black, white, or chrome housing
- Available with smoked lenses
- Ground illumination light
- Spotlight color

Micron™ Series*



Features:

- Surface mount installation
- Fully encapsulated
- 5 year warranty
- R65 class 1
- Hard coat
- Scan-Lock technology

TIR3™, LIN3™, LINZ6™, & LINV2™ Series*



Features:

- 5 year warranty
- Black polycarbonate mounting flange
- Fully encapsulated
- Scan-Lock technology
- Hard coat
- R65 class 1

Vertex™ Series



Features:

- Self-contained light
- Available as omni-directional
- Designed to mount in composite
- Clear outer lens, color LEDs

OS™ Series



Features:

- Fully encapsulated
- 5 year warranty
- Includes chrome housing
- Clear outer lens, color LEDs

2G & 5G Series



Features:

- SmartLED design requires no external flasher
- Fully encapsulated
- Includes mounting grommet

4" Round Series



Features:

- Supplied with an adapter for PAR-36 (4.5") applications
- Fully encapsulated
- 5 year warranty
- Hard coat
- Scan-Lock technology
- SAE class - 1

Strip-Lite™ Plus Warning Light



Features:

- Symmetrical center positioned wire exit
- Includes a 12" pigtail
- Low current consumption
- 5 year warranty

400 Series



Features:

- Linear super-LED available in single or dual level warning
- Fully encapsulated
- 5 year warranty
- Available with clear or color lenses

500 Series



Features:

- 5 year warranty
- Linear super-LED available in single or dual level warning
- Available with clear or color lenses
- Fully encapsulated

600 Series



Features:

- Linear super-LED
- Rota-Bean models available
- Available with clear or color lenses
- Available in steady-burn or with internal flasher
- Surface mount and recess mount models
- 5 year warranty

Illumination

Pioneer Micro™



Features:

- MPPBCS, MPPB, & MPRW
- 8" spotlight pattern comes standard
- Includes three additional optic lenses for a light pattern
- Optic lens changes easily
- Injection molded polycarbonate lenses are impact resistant
- Solid-state electronics
- Recessed 15° angle mount with chrome flange
- Low profile pedestal mount available

Pioneer LiFe™ Series



Features:

- LF35
- Floodlight lens included
- 8" TIR spotlight lens
- 100% solid-state electronics
- Impact resistant glass
- Reinforced safety yellow nylon housing
- Adjustable ratcheting mechanism allows for a 180° range of uninterrupted light
- Up to 7 hours of runtime in battery saver mode
- 4-5 hour full charge time
- Rated for more than 2000 charging cycles
- Short circuit
- Thermal protection
- Hard coat
- 5 year warranty
- AC charging available

PAR Replacement Lamps



Features:

- Includes 6" pigtail
- Handheld units
- Includes 90lb pull magnet mount
- Available with clear or smoked lens
- 5 year warranty

PAR-36



Features:

- Floodlight spotlight models
- Black cast aluminum housing
- Super-LED with low current draw
- Stainless steel bracket
- Hardware included
- Two intensities available

Handheld Spot/Floodlights



Features:

- 90° pull magnet
- 8" coiled cord
- Cigar plug
- Built-in push button
- Hard coat
- 5 year warranty

Rubber Housing Spot/Floodlights



Features:

- Rubber stud/swivel housing
- Available with or without lighthead
- Hard-coated lenses
- 5 year warranty

Switches & Controls

Designed for durability and simplistic use, Whelen provides you with various power control centers and switches. The compact and economic PCCW Series is engineered for complete control of numerous auxiliary light functions.

Power Controls Center



Features:

- Backlit function windows
- Handheld or mounted to the dash or console
- LED "On" indicator
- 2 year warranty
- Up to 12-hour battery life

Here at Haaker Equipment Company, we promise to bring you the best from trusted brands like Whelen!





Federal Signal - Light Bars

We know your number one priority is safety, which is why we offer products from Federal Signal. Seeing and being seen requires lightbars, beacons, and more. Keep you and your team safe from dawn to dusk.

Allegiant™ Discrete



Features:

- Low power mode
- Two-color capability
- Low-profile
- Linear LED light bar

Allegiant™ Serial



Features:

- Top domes available in amber, black, blue, grey, clear, and red
- Low power mode
- Two-color capability

Legend® LPX Discrete



Features:

- Low-profile
- Linear LED light bar
- Top domes available in amber, black, blue, grey, clear, and red

Legend® LPXH Tow Discrete



Features:

- Low-profile
- Linear LED light bar
- Controlled flash pattern feature

Legend®



Features:

- Low-profile
- Top domes available in amber, black, blue, grey, clear, and red
- Linear LED light bar
- Low power mode
- 5 year warranty

Navigator® Discrete



Features:

- High-profile
- Linear LED light bar
- Cable LED light bar
- Includes Solaris LED reflector technology
- 5 year warranty

Navigator® Serial



Features:

- Linear LED light bar
- Front flood capability
- High-profile
- Includes Solaris LED reflector technology

Integrity™



Features:

- Top domes available in amber, black, blue, grey, clear, and red
- Low-profile
- Three-color capability
- Includes Solaris LED reflector technology

Valor®



Features:

- Low-profile
- Non-linear V-shaped light bar
- 5 year warranty
- Includes Solaris LED reflector technology
- Front and rear flood

Mini-Light Bars

18" and 25" Navigator®



Features:

- High-profile
- Cable LED light bar
- Solaris LED reflector technology
- Two-color capability

21" Allegiant®



Features:

- Low-profile
- Linear light bar
- Traditional and serial versions available

HighLighter™ LED Pro



Features:

- LED mini-light bar
- Low-power mode
- Low-profile

HighLighter™ LED & LED Plus



Features:

- Uniform 360° light
- Low-profile
- LED mini-light bar

24" Legend® LPX Discrete



Features:

- Low-profile
- Cable LED mini-light bar
- Selectable flash patterns
- Includes Solaris LED reflector technology
- 5 year warranty

LED Beacons

Pro LED Beacon



Features:

- High-profile and low-profile
- Single and dual color versions available
- Low-power mode

Contact us today or visit us online to view our full line of Federal Signal products!

Pulsator® LED



Features:

- High-profile and low-profile
- Selectable flash patterns
- Built-in permanent pipe mount

UltraStar® LED



Features:

- LED Beacon
- Selectable flash pattern feature

SLR Beacon



Features:

- Rotating LED beacon
- High-power
- Built-in permanent, 1" pipe mount
- Multi-voltage
- LED reflector
- 5 year warranty

AL2



Features:

- High-profile
- Single flash pattern
- Multi-voltage
- SAE class 2

LP800 LED



Features:

- Dual level beacon
- Selectable flash patterns
- Built-in 1" pipe mount

LP800 LED - Accessories



Features:

- Two-tier solaris LED reflector technology
- Base Din Mount

Model 651 & 851 LED



Features:

- High-profile and low-profile
- Multiple voltage
- Polycarbonate dome

Firebolt® LED



Features:

- Low-profile
- Multi-voltage
- Class 2 & Class 3
- 5 year warranty

Strobe Beacons

Firebolt® Plus



Features:

- Low-profile
- Rubber base resists corrosion and absorbs harsh shock
- 3 year warranty
- Replacement parts are available for order

Model 401



Features:

- Low-profile
- Polycarbonate dome and base
- Multi-voltage
- Replaceable strobe tube
- SAE class 3

Directional Lighting

Latitude™ SignalMaster



Features:

- Available in 6- or 8- head models
- Three-LEDs per light head
- Interior and exterior mounting brackets available
- Co-extrusion
- Equipped with on-board circuitry
- 5 year warranty

CN SignalMaster™



Features:

- Three-color capability
- Built-in SignalMaster
- Internal or external use
- Includes Solaris LED reflector technology
- 5 year warranty

Escape 72" SignalMaster™



Features:

- Available with amber or clear domes
- 6x4 QuadFlare
- 5 year warranty
- Includes Solaris LED reflector technology

SignalMaster™ Controls



Features:

- Multi-voltage
- One controller operated
- 8-lamp directional lights
- 14 SignalMaster patterns
- AUX IN and AUX OUT
- Turn signal override
- Tactile switch panel
- 3 year warranty

Exterior Mount/Perimeter Lights

IMPAXX®6 & IMPAXX®3



Features:

- LED perimeter light
- SpectraLux
- Multicolor LED technology
- One controller operated
- Waterproof housing
- LEDs offered in amber, blue, green, red, and white
- Fully encapsulated
- 25 flash patterns

MicroPulse® Wide Angle 9



Features:

- Utilizes 9 LEDs
- 12 flash patterns
- UV resistant polycarbonate lens
- 3 year warranty
- Available in chrome

MicroPulse® Wide Angle 6



Features:

- Utilizes 6 LEDs
- 27 flash patterns
- Black bezel included
- Optional white bezel
- Steady burn model
- 3 year warranty

MicroPulse® Ultra**Features:**

- Multiple mounting options features
- 27 selectable flash patterns available
- UV resistant polycarbonate lens

MicroPulse® Ultra Dual**Features:**

- Flash as solid or dual light head
- Multiple mounting options features
- Low-profile
- 3 year warranty

MicroPulse® C Series**Features:**

- Superior warning
- High-powered LEDs
- Single and split color models available
- Low-profile

MicroPulse® Flashing/Marker**Features:**

- Superior warning
- High-powered LEDs
- FVMSS marker light
- Warning light
- Low-profile

FireRay® 4x3**Features:**

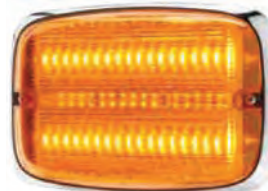
- IPG7 rated for extra protection
- Available in single or split color
- Optional chrome bezel

FireRay® 6x4**Features:**

- IPG7 rated for extra protection
- Warning lights
- Surface mounts easily
- Low power feature

FireRay® 7x3**Features:**

- Available in single or split color
- IPG7 rated for extra protection
- Optional chrome bezel

FireRay® 9x7**Features:**

- Surface mounts easily
- Low power feature
- IPG7 rated for extra protection
- Warning lights

QuadFlare® 4x3**Features:**

- Optional chrome-plated trim bezel available
- Solaris LED reflector technology feature
- Enhanced design
- 5 year warranty

QuadFlare® 6x4**Features:**

- Includes Solaris LED reflector technology
- Unique Quad-X patterns
- Built-in flasher feature
- 5 year warranty

QuadFlare® 7x3**Features:**

- Solaris LED reflector technology feature
- Optional chrome-plated trim bezel available
- Built-in flasher feature
- 5 year warranty

QuadFlare® 9x7**Features:**

- Built-in flasher feature
- 5 year warranty
- Solaris LED reflector technology feature
- Optional chrome-plated trim bezel available

4200s



Features:

- Surface mount for 4-LED light head
- 12 selectable flash pattern
- 12VDC
- Suitable for external and internal mounting options
- Available in amber or white LEDs
- Includes black mounting bezel (optional white or black available)

SignalTech® LED Lights



Features:

- Sealed wiring harness
- Random, alternating, or synchronous flash patterns available
- 3 year warranty

Corner® LED Lights



Features:

- Built-in selectable flash patterns available
- Designed with two models of operation
- Dual color models
- 5 year warranty

Area Lighting

Wireless VisiBeam® / VisiBeam®



Features:

- High-power spotlight
- Superior work area illumination
- Ergonomic design
- Wireless transmitter
- Can connect up to 4 transmitters

You can trust us to bring you products that are designed well, and built to last multiple projects

Mobile Cameras

PBX Series Push Bumper



Features:

- Mount kit included
- Center cross plates and predrilled uprights
- Heavy duty 4 gauge steel uprights
- Wide rubber strips

Mobile Camera Systems



Features:

- High-resolution camera
- Sony CCD cameras
- TFT-LCD color monitors
- Multiple camera lengths available upon request

MB1 LED Message Board



Features:

- Public safety messaging system technology
- LED message display
- Suitable for interior or exterior mounting
- Hardware kit included

Mounting Bars



Features:

- Mounts any type of warning light
- Works with directional lights and work lights
- Accommodates mini and full light bars



Elgin Sweeper Parts

Haaker Equipment Company is recognized as an OEM factory authorized supplier of Premium Quality Elgin Sweeper parts. We supply several Elgin OEM brooms and parts from bearings to conveyor belts. Contact us today or visit us online to view our full line of products and learn more.



Main Brooms

Standard Tube Broom



Features:

- 100% virgin polypropylene
- Abrasion resistant for longer life
- Outstanding surface coverage and flicking action
- One-piece broom unit

Heavy-Duty Tube Broom



Features:

- 100% virgin polypropylene
- Best surface coverage
- More filaments per inch
- Steel tube core
- One-piece broom unit

Strip Broom



Features:

- Outstanding sweeping results
- Easily refilled core for quick change-out
- 100% virgin polypropylene
- Durable steel cores

Saver Sweep Broom



Features:

- Five tight end wraps
- One-piece unit for fast, trouble-free replacement
- 100% virgin polypropylene
- Abrasion resistant

Combination Sweep Tube Broom



Features:

- Combination of polypropylene and wire filaments
- Loosen and sweep up more compacted debris
- Abrasion resistant

Wafer Section Broom



Features:

- 100% virgin polypropylene
- Galvanized spring steel wires
- Steel spacers
- Durable one-piece cores are easily configured and refilled

Extension Brooms

Extension Broom



Features:

- One-piece unit for fast, trouble-free replacement
- 100% virgin polypropylene
- Consistent red color extrusion
- Abrasion resistant

Center Brooms

Center Broom



Features:

- 100% virgin polypropylene
- Compact size
- Easy to ship and store
- Short, dense filaments
- Lightweight

Combination Sweep Extension Broom



Features:

- 100% virgin polypropylene
- Galvanized spring steel wires
- One-piece unit for fast, trouble-free replacement
- Heavy 16 gauge tubing

Combination Center Broom



Features:

- 100% virgin polypropylene
- Galvanized spring steel wires
- Short, dense filaments
- Compact size
- Easy to ship and store

Side Brooms

Side Broom



Features:

- Heavy-Duty option available
- Superior steel wire for extended sweeping hours
- High-impact
- Non-rusting plastic segments

Polypropylene Side Broom



Features:

- Polypropylene filaments
- Spark resistant
- High-impact
- Plastic block segments
- Non-abrasive sweeping

Aggressor XR Side Broom



Features:

- Combination of cable and wire bristle for compacted debris
- One-piece design for easy removal and replacement
- Steel mounting

Aggressor XT Side Broom



Features:

- Rugged, welded construction
- One-piece design for easy removal and replacement
- Steel mounting
- Heavy-duty



Scan For
More Info



Service

We supply top quality workmanship in a timely and professional manner while servicing our customers with our TAP Principals. Our Parts and Service Departments are staffed with factory-trained pros who work hard every day to keep our customers' machines up and running. Check out the many services we offer!

Valve Service

- Kunkle valve service: 1-hour per valve
- Knife service: 1-hour per valve
- Butterfly valve service: 30 minutes per valve

360° & 4-Hour Inspection

- Thorough inspection to ensure all safety items are operating properly
- All units are lifted and inspected to do a thorough and complete inspection
- In-depth testing to certify the unit is running efficiently
- Haaker is an authorized dealer with factory trained & certified technicians

U-Bolt Service

- Torque all U-bolts per manufacturer guidelines
- Complete underbody inspection and lubrication of all zerk fittings
- Help eliminate unwanted expensive repairs

A/C Service

Have an issue with your A/C? Let our ASE certified staff inspect your equipment's A/C system.

Keep your operators cool and productive all day long.

Chassis Diagnostics

- Keep your equipment running without having to send your equipment to multiple service providers
- Bring your equipment to us so we can identify the best route for repair





Air Compressor Add-On For HXX Units

Here at Haaker Equipment Company, we offer a ready-to-go air compressor retro kit from Vanair®. This kit is designed to operate by diverting the hydraulic flow from the water pump to the air compressor.

- 185 cfm @ 100 PSI air compressor add-on for HXX units; subject to hydraulic capabilities, available space on unit.
- Save water while excavating with compressed air
- Turn your unit into a multi-purpose excavating machine
- No additional trucks or personnel needed on job sites
- Ability to re-use soil that has been removed from the excavated area

Tool-less Rotatable Upper Boom Hose

- Prolong the life of your upper debris hose
- This kit will give your operators the capability to rotate the wearable section of the upper boom hose on the fly
- No tools needed

Quarterly Service Agreements

Let our service teams come up with a custom service plan for your equipment.

- All equipment has designated service intervals
- We have the experience to maintain your equipment based on how the unit is being operated

Vanguard Install

When bacteria lingers, it can become deadly. The Vanguard System blasts off disease-causing germs with antibacterial-infused water to help destroy pathogens.

- Installation by our skilled service team
- Reduce harmful bacteria by up to 98%
- Air purge ability that clears the waterline when operating in freezing conditions
- UV-stable concentrate that remains at liquid-state to a temperature of -30° F
- Sani-Solution uniquely formulated to help sanitize tools and surfaces

Factory Authorized Rebuild Program

Update and refresh your equipment as a whole to extend the life of your equipment and ensuring all components meet factory standards.

- All technicians are factory trained and certified to work on your equipment
- A factory quality rebuild in your local area
- Free inspection if quote is approved
- All-points vehicle inspection from an authorized dealer
- Receive between 5-10% off OEM parts
- Rebuild your equipment with genuine OEM parts

Custom Fabrication To Resolve Your Needs

Let our talented staff provide the solutions that you need in order to keep your equipment running at its peak performance. No idea is too big or too small! We have certified welders that can make your idea become a reality.



Anti-Splash Device For Boom

- A simple "check valve" plate installed on the inside of the debris body and prevents debris spillage from going out of the front boom inlet
- This plate simply closes when transporting and opens when the blower is engaged

High Flow Debris Body Washout Nozzle

- The newly designed nozzle is serviceable
- Provides a large amount of flow to clean out your debris body efficiently and effectively

As an essential business to multiple municipal agencies and a business that is focused on cleaning, we stand ready to help all our customers in any way that we can from servicing, training, procuring and renting equipment.

Skid Plate For Electrical & Water Hose

We have designed a robust skid plate to help reduce downtime by protecting the electrical, hydraulic and water lines.



Float Ball Indicator Screen

We have designed this float ball screen to prevent bags and other hanging debris from latching onto the float ball arm which affects the operators' ability to see how much debris they have in their debris body.

10" Knife Valve

- In the scenario where your operators can't pump off or decant, we have the solution to protect your equipment
- Custom fabricated for your unit to protect your investment

We stand on our promise to resolve your concerns while exceeding expectations and keeping your machines running at peak performance!



Quick Release Tube Racks

- Upgrade your 2100 classic trucks to decrease operator fatigue
- Reduce rubber bungee cord failures by eliminating the use of bungee cords

Bumper Modification For Hose Reel

- Custom bumper modification helps prolong the life of the rotek
- No additional steps for your staff
- Once the bumper stop is installed it helps hold the rotek in place and helps prevent movement from the rotek while transporting

HXX Circuit Add-On

Make your standard combination sewer cleaner into a powerful multi-purpose digging machine.



Training

"We at Haaker Equipment are proud of our customer-first mentality through a team that is encouraged and empowered to provide excellent service. As we look forward to what the future holds our family culture ensures that we will keep our priorities of providing the best products and services. With specialists in sewer equipment, street sweeping, sewer inspection, and general cleaning we can help guide our customers to make an informed and positive decision. We look forward to being your partner through each purchase for years to come." - Robin Haaker, President

Part of our commitment to you is to provide you with great service. How we do this is through our excellent and thorough training program. We offer training for our team and for our customers by providing video series and literature. Check out some of our training playlists here:

Haaker University



Elgin Crosswind



Vactor 2100i





Vactor Sewer Truck Rentals

An esteemed provider of rental equipment for Vactor truck and street sweeper needs, Haaker Equipment Company lends you our reliable fleet of sewer cleaners and street sweepers. Rent our equipment on a monthly, weekly, or daily basis, and use them anywhere in the USA. Let us help you make a choice that can get you the best value.

Vactor 2100i Fan



Features:

- New IntuiTouch™ single in-cab control screen
- Singular and adjustable control panel
- Optional wireless controls
- New optional RDB 1015™ Rapid Deployment Boom
- 7" touch screen control
- Includes controls and viewing screen for camera, lighting, and recirculation
- PTO/Transfer case activation
- One-touch engagement
- Articulating controls

Vactor 2100i PD



Features:

- Blower offerings to provide inlet volumes
- 18 Hg vacuum
- Unique design
- Productive multi-stage blower filtration system
- Operator-friendly
- 7" touch screen control
- Includes controls and viewing screen for camera, lighting, and recirculation
- PTO/Transfer case activation
- One-touch engagement
- Articulating controls

TRUVAC Hydro Excavator Trucks

FLXX



Features:

- Air and Hydro
- 16" - HG
- 10gpm @ 3,000 P.S.I.
- Larger capacity available in 9yd³, tandem axle

Paradigm



Features:

- 6" vacuum system
- Single engine
- Class 6, Non CDL
- Contain and dispose of mud
- Built with safety in mind



HXX Full Size

Features:

- 8" vacuum system
- 12yd³ or 15yd³ debris body
- 10 or 20gpm @ 3,000 P.S.I.
- Decrease cost of digging
- Less-invasive

Elgin Street Sweepers

Crosswind



Features:

- Highly efficient air conveyance system
- High volume
- Superior air routing path and vacuum source
- One-pass pickup

Broom Bear



Features:

- Enhanced productivity
- Maximum strength
- High torque diesel engine
- Ultimate reliability and power
- Single engine layout
- Better fuel efficiency

Broom Badger



Features:

- Compact mechanical sweeper design
- Dual-engine sweeper
- Low-profile design
- Mounted on an Isuzu NR
- Easy to operate and service

RegenX



Features:

- Single engine or dual engine
- Large-capacity hopper
- PM-10 compliant
- 50° dump angle
- Easy to operate and service
- Smooth design



Harben Trailer Jettors E180/ET180

Features:

- Single or double axle trailer
- 375 or 750 gallon capacity
- 18 gpm @ 4,000 P.S.I.
- Cleans pipes from 1" to 18"
- "Run Dry" high pressure diaphragm pump



Advance Floor Sweepers & Scrubbers

Want to impress your customers while growing your contract cleaning business? Of course, you do! The key is delivering high-quality results every time, and our floor scrubbers and other cleaning equipment from Advance help you do just that. We know that building service contractors have to deal with many challenges on the job: markets are shrinking, profits are being pushed down by price pressures and employee turnover can be particularly high. The key to gaining and keeping clients is to always deliver the highest-quality cleaning results, no matter what.



7765

Features:

- Large sweep & scrub path
- 100 GL recovery/solution tanks
- Designed for up to 600 lbs of downward brush pressure

We provide the most innovative equipment that allows you to tackle the toughest cleaning challenges with confidence.

Contact us today to learn more!



Features:

- Hybrid technology and Ecoflex™
- ClearView™ sightlines
- SmartFlow™ tilt out recovery tank
- Heated water, pressure washer



Features:

- Heavy-duty, outdoor sweeper
- Up to 77" sweeping path
- Dust Guard™ fog system
- 60" multilevel high dump

PowerBoss Floor Scrubbers, Sweepers & Walk Behinds

Armadillo 9X/10X



Features:

- All steel construction
- Full service 180° swing-out engine
- Up to 84" sweeping path (dual side brooms)
- Dual synthetic panel filters
- Oversized curb climbing tires

Phoenix 20 Super Sport - Walk-Behind Scrubber



Features:

- Compact brush scrubber
- Traction drive
- 12 gallon solution tanks
- 13 gallon recovery tanks
- Covers 20,000 sq. ft. per hour
- Total operator comfort

Phoenix 2830 / 3030 / 3330 Walk-Behind Scrubber



Features:

- Cylindrical/Disc brushes
- Dual brush motors
- Direct brush release system

Mounted Pressure Washer Trailer



Features:

- Powder-coated steel frame
- Torflex axles
- Customize with your choice of accessories
- Integrated storage tube

Whether you are a seasoned veteran at using cleaning equipment or someone that is using it for the first time our machines are easy to operate and perform at the highest standards every time. Visit us online to view our full rental fleet.



Scan For More Info

PRESSURE WASHERS



We are proud to offer HydroTek trailer mounted pressure washers to our great customers. Designed for optimal performance in even the toughest environments, these durable machines tackle tough jobs with ease.

Hot Water Pressure Washers

SS Series



Features:

- Rugged "Pro-TECT-it" frame
- Stainless steel panels
- Simple to use controls
- Industrial engines

HD Series



Features:

- Adjustable temperature
- Safety relief valve
- Heavy-duty industrial motor
- Downstream chemical injection

SM Series



Features:

- Portable and compact
- Up to 4 gpm at 4000 psi
- Electric start 14 hp Kohler engine
- Lifetime coil warranty

HN Series



Features:

- Cold and hot water stationary skid
- Up to 4 gpm at 3500 psi
- Natural gas, propane, or diesel
- Stainless steel housing frame

Cold Water Pressure Washers

CPS Series



Features:

- Panel mounted unloader
- Belt drive pump
- Includes nozzles with insulated quick couplers

CPX Series



Features:

- High output engines
- Steel control panel
- Remote fuel tank
- Belt guard

Accessories

Hydro Twister



Features:

- Convertible undercarriage surface cleaner
- Use with hot or cold water
- Rust resistant
- Additional nozzle sizes available

Hose Reels



Features:

- Can be mounted anywhere
- 180° swivel
- Shipped fully assembled
- Designed with a lock pin
- Made in the USA

Surface Cleaner



Features:

- High cleaning speed
- Works with hot and cold water
- Effectively removes grease
- Gets the job done quickly



Trailer & Tank Skids

ProTowWash® Portable Commercial Trailer



Features:

- Powder-coated steel frame
- High capacity water filter
- Water-tight seal
- Torsion axles

HydroTek Tank Skid



Features:

- Easy 4-bolt installation
- Securely attach to any vehicle
- Compact design
- "BOLT & Go" convenience

Alkota 12v Trailer



Features:

- Cold and hot water skid
- Up to 5 gpm at 3500 psi
- 18 hp Kohler engine
- 200 gallon water tank
- Single axle trailer

Tuffy PowerLoad Trailer



Features:

- 100% electric powered
- Onboard diesel fired heat
- 200 gallon tank with bypass and low water shutoff
- Aluminum tandem torsion axle with electric brakes

Water Recycle Systems

Portable Recycle Systems



Features:

- Automatic pump-out
- Stainless vacuum scupper
- Vacuum recovery, 12 GPM
- Oil-absorbing shock

Stationary Recycle Systems



Features:

- Replaceable cartridge filter
- Rust-proof stainless steel frame
- Automatic back flush
- Multi-media filter
- 270 gallon cleaned-water tank



Scan For More Info



Walk Behind Floor Sweepers

Here at Total Clean, we are committed to maintaining the health and safety of all workers. Part of that commitment is offering effective silica dust exposure control plans that are customized to meet the needs of every organization. With a 99.9% filtration efficiency, our equipment by PowerBoss holds our safety measures to the highest standard.



Advance SW900

Features:

- For indoor and outdoor use
- Large main broom with dual side brooms to enhance productivity
- Ideal for cleaning contractors, industry and manufacturing, schools, hotels, warehouses, and exhibitions



PowerBoss Collector 34

Features:

- High sweeping performance
- 100% hopper capacity
- Powerful dust filter
- Heavy-duty steel frame
- Parking brake with automatic release



Advance Terra 28

Features:

- 28' wide sweep paths
- Side broom eliminates the need for edge cleaning after sweeping
- Compact and easy to maneuver
- Sweeps quietly
- Greater productivity

Ride-On Floor Sweepers

If you are looking to remove debris from large areas, we have a product for you! Total Clean is the leading sweeper distributor for street sweepers, parking lot sweepers, truck sweepers, road sweepers, and industrial sweepers. We are proud to be one of the leading Nilfisk-Advance, PowerBoss, NiteHawk, and Elgin sweeper dealers in the country that services California, Arizona, and Nevada by offering a vast range of sweeper sales, parts, and services.

Advance SW8000



Features:

- Heavy-duty, outdoor sweeper
- Up to 77" sweeping path
- Dust Guard™ fog system
- 60" multilevel high dump

Robotic Floor Care



Features:

- Autonomous scrubber
- Consistent cleaning
- Auto fill-in feature
- Service and training included

PowerBoss Armadillo 9X/10X



Features:

- All steel construction
- Full service 180° swing-out engine
- Up to 84" sweeping path (dual side brooms)
- Dual synthetic panel filters
- Oversized curb climbing tires

PowerBoss Atlas



Features:

- 64" sweep path
- 60" multilevel high dump
- Safety vision dump window
- Power control dust collection system
- Heavy-duty design

Outdoor Vacuum Sweepers

Our outdoor vacuum sweepers by Madvac and Glutton are the perfect solution for cleaning public spaces. Whether you are looking for compact models ideal for tight urban spaces or 100% electric litter vacs, we've got you covered.



Madvac LS175

Features:

- High profile approach to cost effective vacuuming
- 2000 CFM rating
- 2 gpm at 1800 psi super wash
- High dumping with 1.75 yd³ hopper



Madvac LN50

Features:

- All terrain litter picker
- Diesel or electric powered
- 48" wide for narrow spaces
- 6 position joystick arm control
- 15 ft wander hose



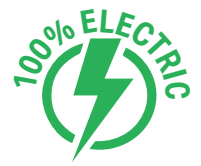
Glutton Collect

Features:

- 100% Electric with up to 16 hours of run time
- Compact, maneuverable and self-propelled to climb steep slopes & uneven terrain
- 24 M2 Glutton dust filter
- High suction power and variable speed

Walk-Behind Floor Scrubbers

We provide the leading floor scrubbing machines that help you clean more efficiently. Our machines redefine maneuverability with their innovative designs and powerful scrubbing in just one pass.



Advance 750 & 800 ⚡

Features:

- Low-maintenance
- High productivity
- Continuous scrubbing
- Reduces dump/refill cycles
- Burst power feature
- Minimize water usage



Advance SC900 ⚡

Features:

- Core task focused
- Removes common complexity routinely associated with floor cleaning equipment
- Lower overall cleaning cost
- Easy to operate and service



PowerBoss Phoenix 24 ⚡

Features:

- Cylindrical brush deck
- Integrated scrubbing function
- Corrosion-resistant aluminum coating
- Flow-optimized dirty water tank
- Easy, ergonomic operation



PowerBoss Phoenix 26 ⚡

Features:

- Compact disc brush scrubber
- 26" cleaning path
- Easy-to-use controls
- Low brush deck design
- Cost-effective solution



PowerBoss Phoenix 30 ⚡

Features:

- Two powerful brush motors
- 20% water and chemical savings
- Easy-to-understand
- Designed to give the operator more room for their feet while operating

Ride-On Floor Scrubbers

Floor scrubbers in their simplest forms are devices for cleaning floors. These can be basic implements like floor brushes, mops, and ride-on and walk-behind machines. These machines are generally used to clean up bigger floor spaces with their water injection systems that flush cleaning solutions and water on to the floor.



PowerBoss Nautilus HD

Features:

- Hot water option available
- Easy access debris tray
- Adjustable squeegee feature
- Edge scrubbing
- Stainless steel scrub deck



PowerBoss Admiral 30"

Features:

- Compact, maneuverable, & ergonomic
- Guided wheels
- Sealed drive motor
- 30" cleaning path
- Easy access



Scrubmaster B120/B175/B260

Features:

- No tools - Brush/Squeegee change
- Stainless steel components
- Onboard diagnostics
- One-touch all function buttons



Advance SC6000

Features:

- SmartFlow™ technology
- No tools - Brush/Squeegee change
- SmartKey™ system



Advance SC6500

Features:

- Effortless control and efficiency
- Sustainable scrubbing



Advance Adgressor

Features:

- Ease of operation
- SmartFlow™ technology
- SmartKey™ & supervisor key settings
- Maximum operator safety

Ride-On Sweeper-Scrubbers

Want to impress your customers while growing your contract cleaning business? The key is delivering high-quality results every time. Our Advance floor scrubbers and cleaning equipment will help you do just that.



Powerboss B400 RH

Features:

- 100% electric with up to 7 hours of run time
- 48" scrubbing path and 65" sweeping path with dual side brooms
- 106 gallon solution and recovery tanks



Advance SC7010

Features:

- Hybrid technology and Ecoflex™
- ClearView™ sight lines
- SmartFlow™ tilt out recovery tank
- Heated water, pressure washer



Advance 7765

Features:

- Large sweep & scrub path
- 100 GL recovery/solution tanks
- Designed for up to 600 lbs of downward brush pressure

Parking Lot Sweepers

The NiteHawk parking lot sweepers are designed to increase performance and productivity. At a full stroke, the design of the hydraulic-powered pump makes our NiteHawk trucks perfect for tough sweeping jobs.



NiteHawk Osprey II

Features:

- GMC / Ford chassis
- Stainless steel hopper
- Oversize access doors
- Rear storage toolboxes
- High flow fan
- Maximum capacity in a low profile sweeper



NiteHawk Raptor II

Features:

- Advanced hydraulics
- "Stealth Sweeping" system
- 5-year warranty
- Lowest cost of operation
- Stainless steel hopper
- High visibility and innovative controls



Coming 2024



Scan For More Info



Columbia Utility Vehicles

For decades, Columbia has been equipping municipalities with versatile, efficient, and safe utility vehicles. We work closely to understand your budget, needs, and specifications to configure solutions that save you money and help you move people and cargo safely. Contact us today or visit us online to learn more about our Columbia Utility Vehicles.



The Chariot ⚡

Features:

- Move 1 operator
- Rated capacity up to 400 lbs
- Up to a 25-mile range
- Max forward speed up to 9 miles per hour



The Expediter ⚡

Features:

- Move up to 2 passengers
- Tow capacity up to 1,000 lbs
- Up to a 25-mile range
- Narrow design



Stockchaser ⚡

Features:

- Move 1 operator
- Tow capacity up to 6,000 lbs
- Max forward speed up to 8.5 miles per hour



Journeyman ⚡

Features:

- Move up to 6 passengers
- Rated capacity up to 1,100 lbs
- Up to a 40-mile range
- Max forward speed up to 25 miles per hour



Utilitruck ⚡

Features:

- Move up to 4 passengers
- Tow capacity up to 1,500 lbs
- Tailored to fit various virtually any vehicle application



Payloader ⚡

Features:

- Move up to 4 passengers
- Rated capacity up to 4,000 lbs
- Up to a 30-mile range
- Tow capacity up to 18,000 lbs
- Exceptional maneuverability

Custom Platform

The Custom Platform's innovative design offers various drive axle and battery pack configurations for optimal balance in payload carrying capacity, maximum range, and top turning performance. For an added feature, an optional Speed Rail Attach System allows for hundreds of platform uplifts.



Pickman Utility Vehicles

The Pickman line of 100% electric utility vehicles are compact, maneuverable, and capable. They can be outfitted and customized to your needs to make your facility or business as efficient as possible. With dual heavy tow load and carry capacities, these small electric vehicles will be the workhorse of your fleet.



Classic ⚡

Features:

- 4,000 lbs towing and 1,400 lbs payload capacity
- Versatile truck bed measuring 63" x 48"
- Brake assist and backup camera
- Battery operated with up to 130 mile range
- 25 mph top speed



Passenger ⚡

Features:

- Move, carry or tow with power & efficiency
- 4,000 lbs towing and 660 lbs payload capacity
- Transport up to 4 passengers
- Battery operated with up to 130 mile range
- 25 mph top speed



Mission ⚡

Features:

- Move, carry or tow with power & efficiency
- 4,000 lbs towing and 1,100 lbs payload capacity
- 80 ft³ cargo box with refrigeration/freezer options
- Battery operated with up to 130 mile range



Pickman XR 2D ⚡

Features:

- 2 door, single cab w/ dual motors
- 5,000 lbs towing capacity
- 1,400 lbs payload capacity
- All wheel drive and off-road terrain capable
- Battery operated with up to 120 mile range



Pickman XR 4D ⚡

Features:

- 4 door, dual cab w/ dual motors
- 5,000 lbs towing capacity
- 660 lbs payload capacity
- All wheel drive and off-road terrain capable
- Battery operated with up to 120 mile range



Scan For More Info



100% Electric Powered Equipment

As alternative fuel equipment options are brought to market, Haaker has built our electric fleet options to provide our customers with industry breaking technologies. Whether customers are impacted by state regulations or want to transition to more cost effective fuel options, we are prepared to help our customers find the best equipment options for their fleet.



Elgin Broom Bear Mechanical Sweeper

Features:

- 400 kWh battery capacity
- 300 hp and up to 1,700 ft lbs of torque
- Recharge in as quickly as 3 hours
- 4.5 yd³ hopper with a variable dump height between 38"-11'2"



EnviroSight Camera Truck

Features:

- Portably power equipment
- Rapid Pipe Assessment & Cloud Based AI
- Avoid Confined Space Entry
- Understand Hazards



OK Champion S660E Rodder

Features:

- 8 hour battery capacity
- 35 hp electric motor
- Rotation speed 0 to 175 rpm
- Rod pulling force 3,500 lbs @ 200 fpm



All Electric



Zero Emissions



Battery Powered



Tuffy Pressure Washer

Features:

- Skid and trailer mounted
- Full charge in 6.5 hours (230v)
- 4 gpm at 4000 psi
- 100 gallon water tank w/ automatic fill



Liberty SC50 Autonomous

Features:

- Copycat, fill in, and manual modes
- Consistent 98-99.5% coverage
- 20" scrub path
- 15 gallon solution & recovery tanks



Columbia & Pickman Lines

Features:

- Move, carry or tow with power
- Carrying capacities up to 4,000 lbs
- Up to 6 passengers
- Battery operated up to 130 mile range



Scrubmaster B400RH

Features:

- 45" scrubbing path & 60" sweeping path with dust control
- 105 gallon solution/recovery tanks
- 8+ hour runtime on a single charge
- 5.3 ft³ dry sweeping hopper



Sweepmaster 1500

Features:

- 50-64" sweeping path
- 60" high dump hopper with max fill overthrow design
- 8.8 ft³ hopper



Nautilus E

Features:

- 55" scrubbing path with optional side brooms
- 90 gallon solution/recovery tanks
- 8+ hour runtime on a single charge



Madvac LS125E

Features:

- 48" wide, high-dump sweeper
- 12 foot retractable wander hose
- Industry leading 2350 CFM rating
- No CDL required



Madvac LR50E

Features:

- No CDL required
- 9 hours of runtime on a 5 hour charge
- Cleans up to 84,480 ft² per hour
- 75 gallon litter capacity



Glutton Collect

Features:

- Up to 16 hours of run time
- Compact, maneuverable and self-propelled to climb steep terrain
- 24 M2 Glutton dust filter

Coming Soon!



Stetco Bucket Truck



Nitehawk Raptor Electric

Live in California?
Find our CARB
regulation
resources here.

**Haaker.com/
CARB**



“Nobody works harder for you than Haaker.”

We deliver the highest quality products and services through a team empowered to meet and exceed customer expectations.

- Team Haaker



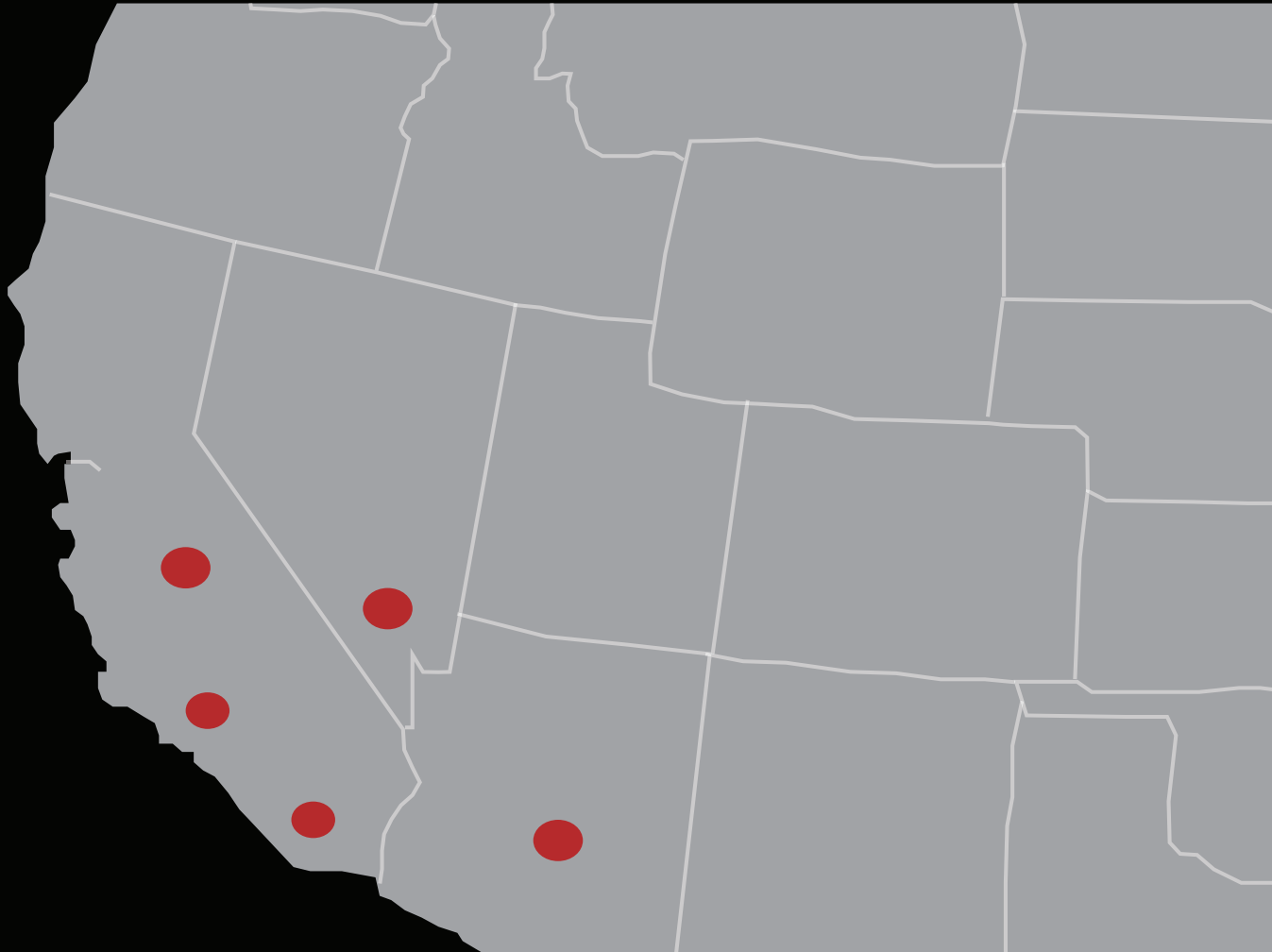
**GOT QUESTIONS?
WE GOT ANSWERS!**

Give us a call today!


800.200.3432


HAAKER
EQUIPMENT COMPANY


Haaker Equipment Company is proudly located in:




Visit us online for more information: www.haaker.com

 facebook.com/haakerequipment

 instagram.com/haaker_equipment_co

 linkedin.com/company/haaker

 youtube.com/@haakeruniversity

HAAKER

EQUIPMENT COMPANY Copyright © 2024

LOS ANGELES
2070 North White Ave.
La Verne, CA 91750
(909) 598-2706

SAN DIEGO
9465 Mission Park Pl.
Santee, CA 92071
(619) 593-1946

CENTRAL VALLEY
4490 South K St.
Tulare, CA 93274
(559) 220-8897

NEVADA
4645 Copper Sage St.
Las Vegas, NV 89115
(702) 639-0156

ARIZONA
2939 West Windsor Ave.
Phoenix, AZ 85009
(602) 266-8214